

Table of Contents

	Page
<i>PowerLevel</i>	
Already Level	2
Panel Communication	2
Park Brake	3
Emergency Retract	4
Zero Mode	5
Out of Level Tolerance	5
Wait	6
Low Voltage	6
Failure Mode	7
<i>Level Best</i>	
Fault Code 1	9
Fault Code 2	10
Fault Code 3	11

Hydraulic Leveling System Troubleshooting Flowcharts

powergear®
PowerLevel™
▲ s e r i e s ▲
Power DOWN/Spring Return

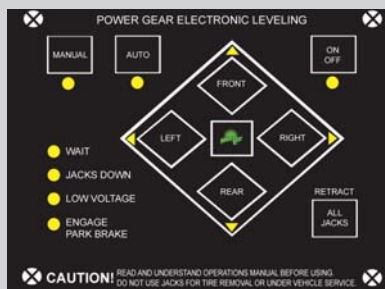
powergear®
Kwikkee®

1217 E. 7th Street
Mishawaka, In 46544
www.powergearus.com

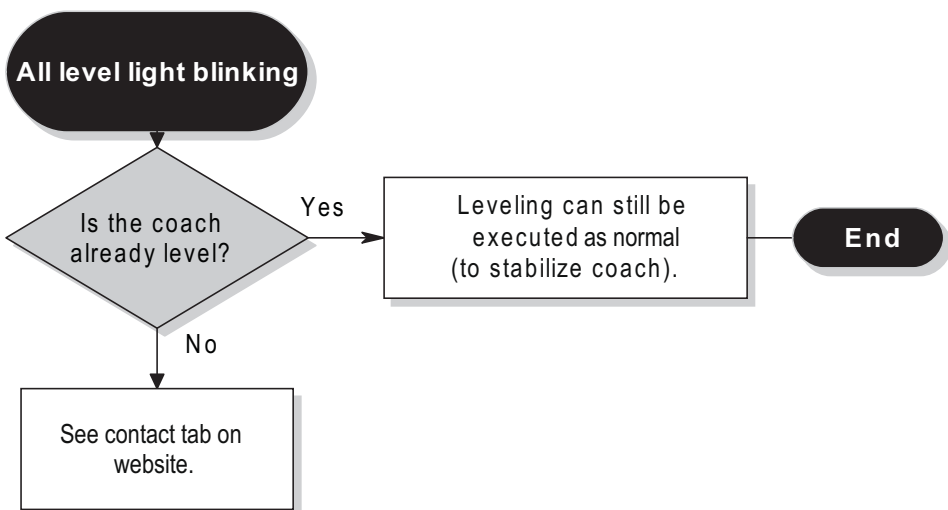
LEVEL
2 0 0 0
2 0 1 0
3 0 0 0
3 0 1 0
Best
Power UP/Power Down

Check

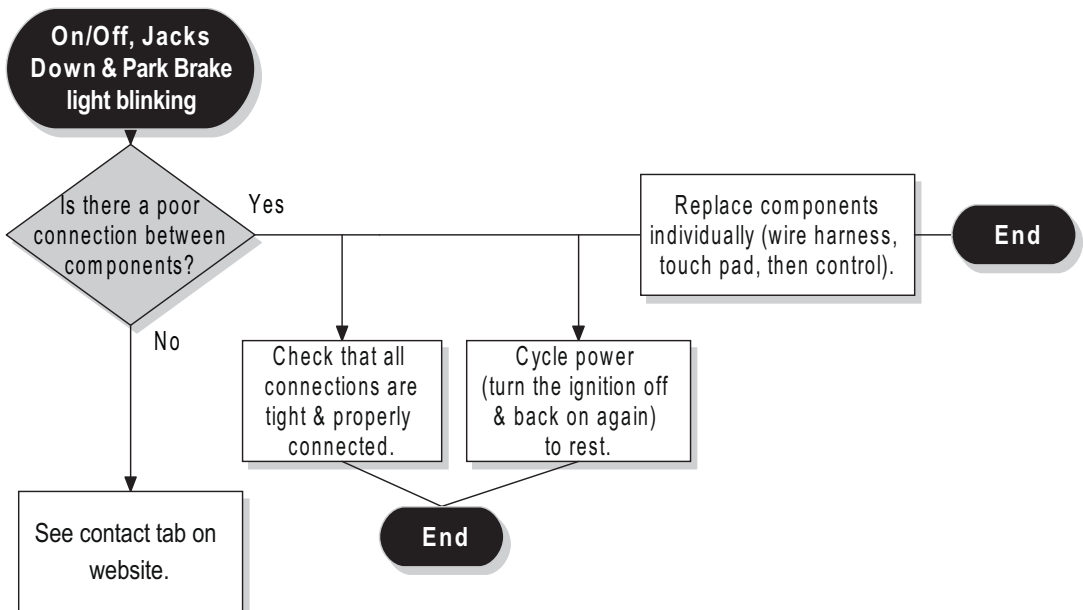
www.powergearus.com
for the latest manual &
tip sheet information



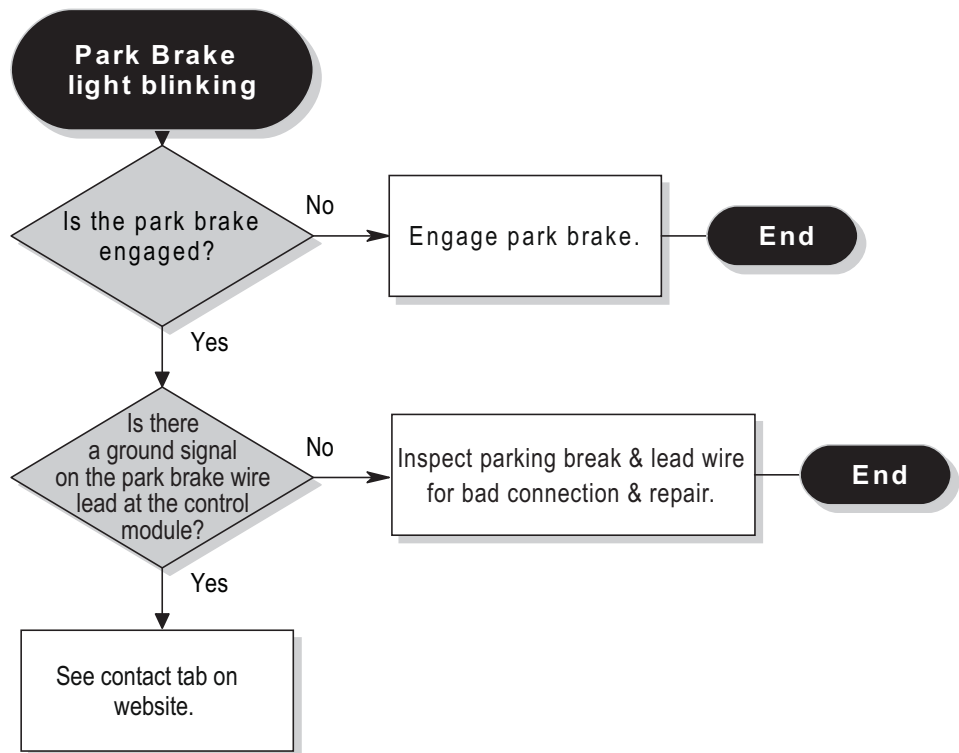
Already Level



Panel Communication Error



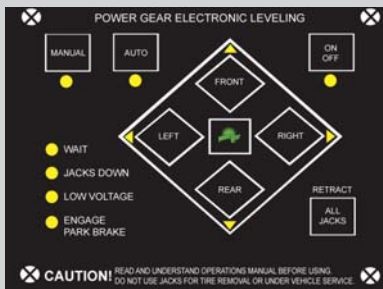
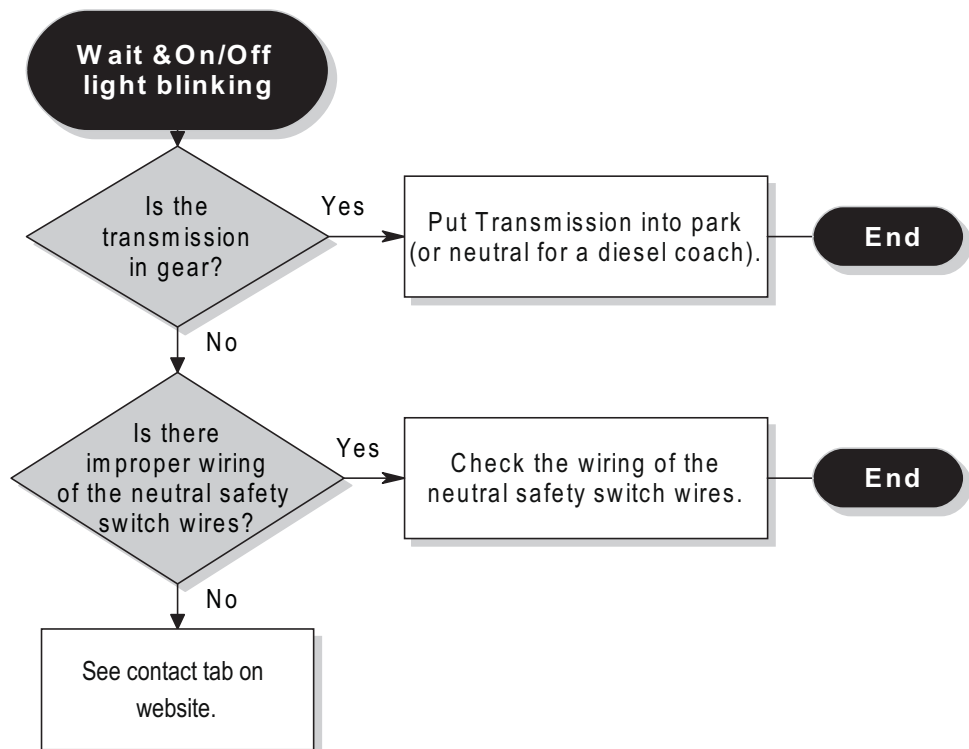
Park Brake



Check

www.powergearus.com
for the latest manual &
tip sheet information

Transmission



Emergency Retract

All lights are blinking
(buzzer is also on &
jacks are retracting)

Has the
coach been put
into gear and/or the
parking brake is
disengaged while the
jacks are down &
ignition is in run
position?

Yes

Engage park brake & make
sure coach is not in gear while
the jacks are down or while
extending jacks.

End

No

Check the wiring of
the neutral safety
switch &/or the parking
brake wire(s)

Is the
neutral safety
switch and/or the
parking brake wires
improperly
wired?

Yes

Check the wiring of the
neutral safety switch wires.

End

No

Is there
low fluid in the
reservoir?

Yes

Check the fluid
level in the reservoir.

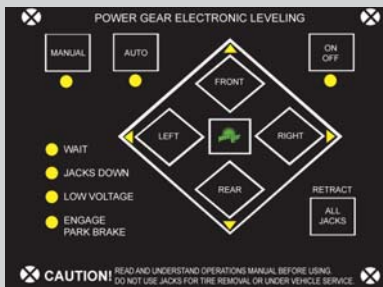
End

No

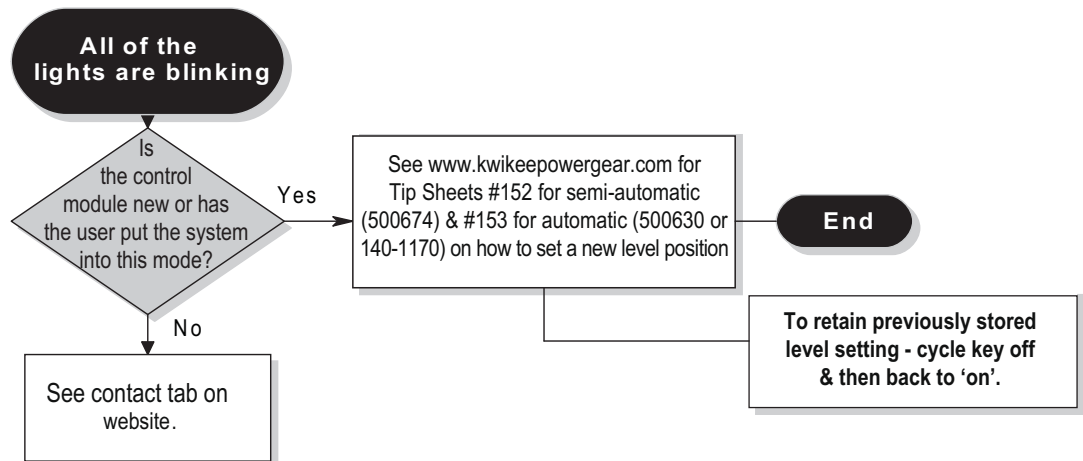
See contact tab on
website.

Check

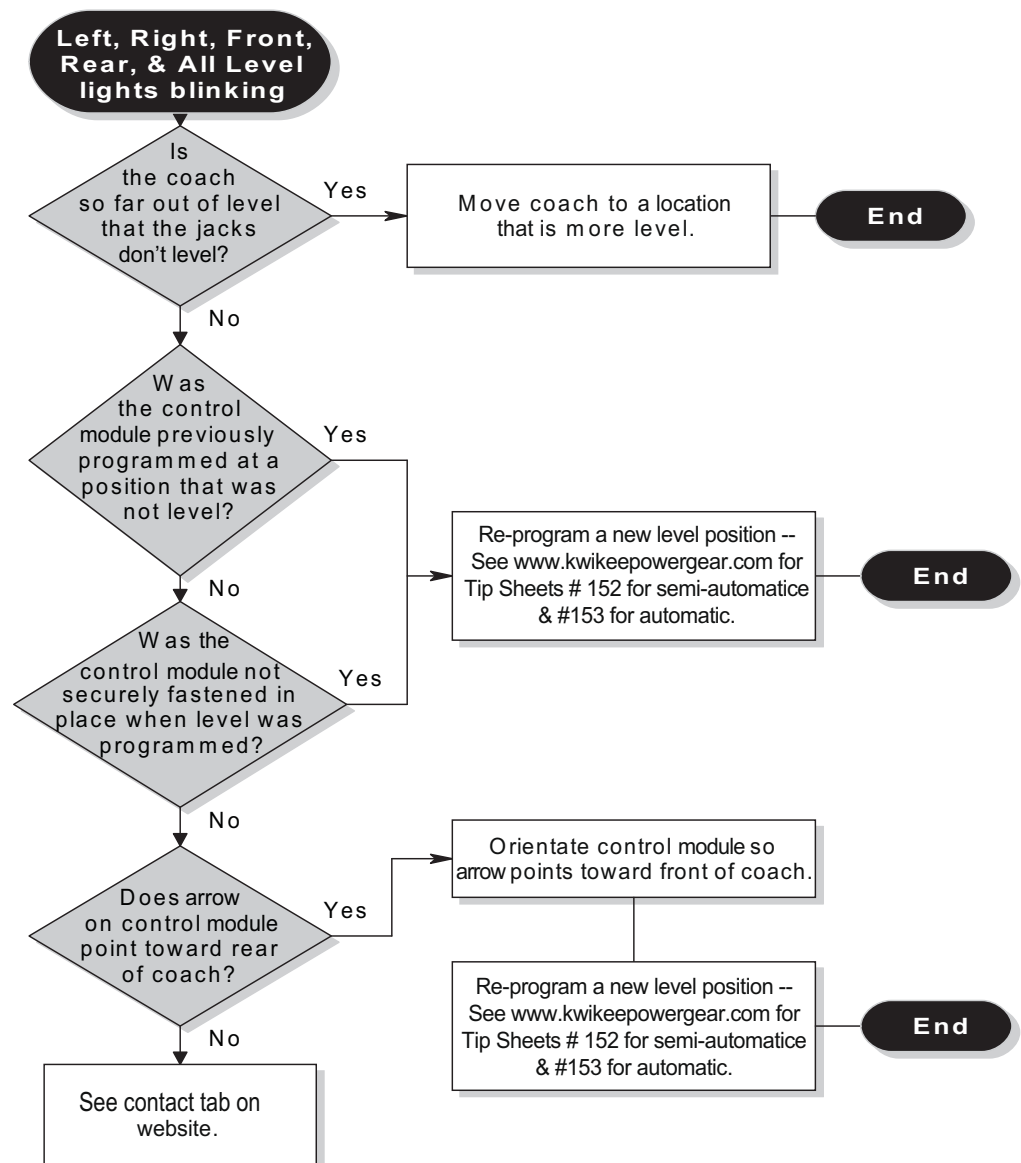
www.powergearus.com
for the latest manual &
tip sheet information



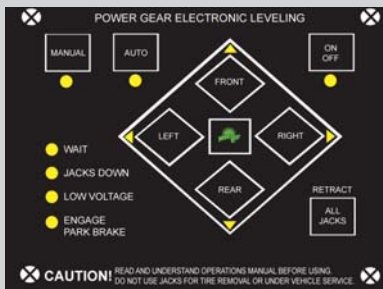
Zero Mode



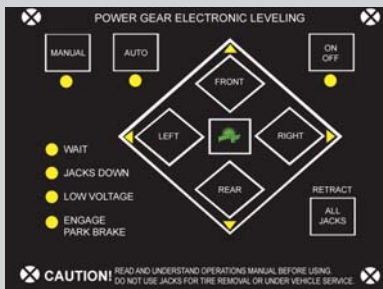
Out of Level Tolerance



Check
www.powergearus.com
for the latest manual &
tip sheet information



Check
www.powergearus.com
for the latest manual &
tip sheet information



Wait

The Wait light is blinking

The control module is busy. The light will stop blinking in less than one minute.

No

See contact tab on website.

Low Voltage

The Low Voltage light is on or blinking

Is there Voltage at the control module?

No

Is there continuity across the in line fuse?

Yes

Repair or replace wire or connection.

End

No

Replace 10 Amp fuse.

End

Is the Voltage low at the control module?

Yes

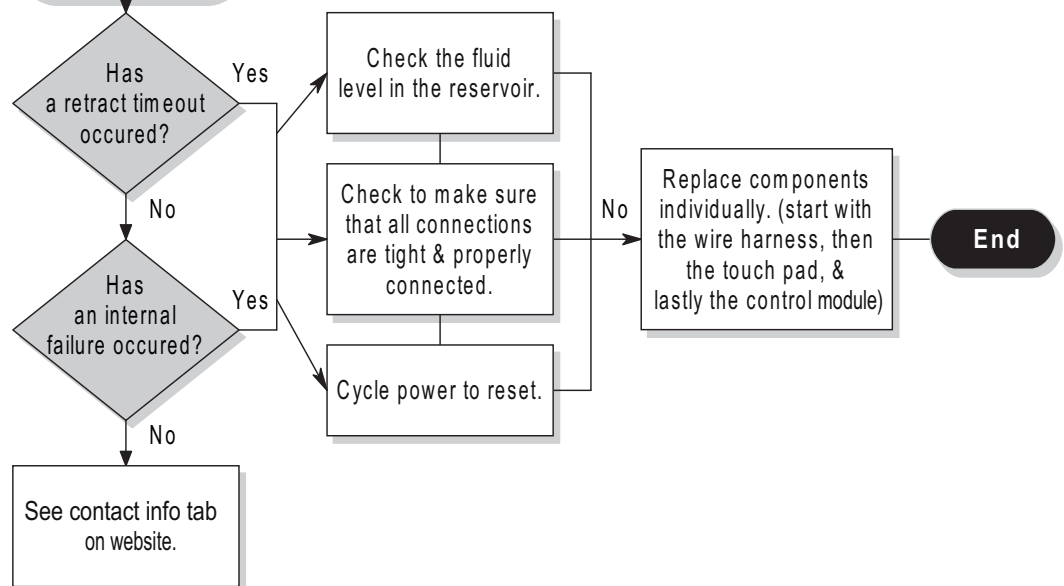
Charge or replace battery.

End

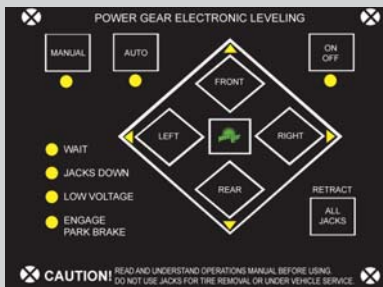
No

See contact tab on website.

If a leveling procedure is being attempted, the coach should be running to ensure a good voltage supply at the control module.

Failure Mode**Left, Right, & All Level lights blinking**

Check
www.powergearus.com
for the latest manual &
tip sheet information



Check
www.powergearus.com
for the latest manual &
tip sheet information

LEVEL
2 0 0 0
2 0 1 0
3 0 0 0
3 0 1 0

Best

Power UP/Power Down



Fault Code 1

No lights are operational on panel

Disconnect 4-wire connector from module for 5-seconds and reattach.

Does the panel come on?

Yes

End

See contact tab on website to obtain p/n 1510000097 Power Harness.

No

Check voltage between RED wire & Black on 4-pin connector.

Check wiring between 10-pin and 6-pin connector and control module, repair.

Is voltage less than 12 volts?

Yes

Check for voltage at motor solenoid (RED wire), must be at least 12 Volts, repair charging system if not.

Check wiring between 4-pin connector (RED) & pump solenoid & 4-pin connector (BLACK) ground connection on pump.

No

Carefully remove touch panel from bezel, check 3-amp fuse.

DO NOT use a knife or sharp instrument to remove touchpad.

Fuse blown?

Yes

Replace fuse.

End

No

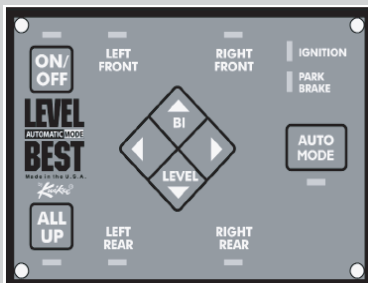
Replace control module.

No

See contact tab on website.

Check

www.powergearus.com
for the latest manual &
tip sheet information



Fault Code 2

**One Jack leg
won't move
(all others do)**

Disconnect 2-wire
connector at jack
solenoid controlling
jack operation.

Using voltmeter between
WHITE & GREY wire connector,
have assistant depress button
on touch pad to operate jack
in question.

Check battery
changing system
for 12+ VDC, repair.

Check wiring between 10-pin
and 6-pin connector and
control module, repair.

Is reading less
than 12 volts?

Yes

Check WHITE wire from
connector to 10-pin or
6-pin connector, repair.

Check GREY wire from
connector to motor
solenoid, repair.

No

Using Ohmmeter, take
reading between
terminals of leg
solenoid.

Reading not
between 8.5-
10 ohms?

Yes

Replace leg solenoid.

End

No

Remove leg solenoid
and bench test.

Is there no
clicking or movement
with 12 VDC?

Yes

Replace leg solenoid.

End

No

Remove top hose or
bottom hose and
operate jack.

No fluid output
from hose?

Yes

Check for kinked hose
to jack.

No

Replace control module.

No

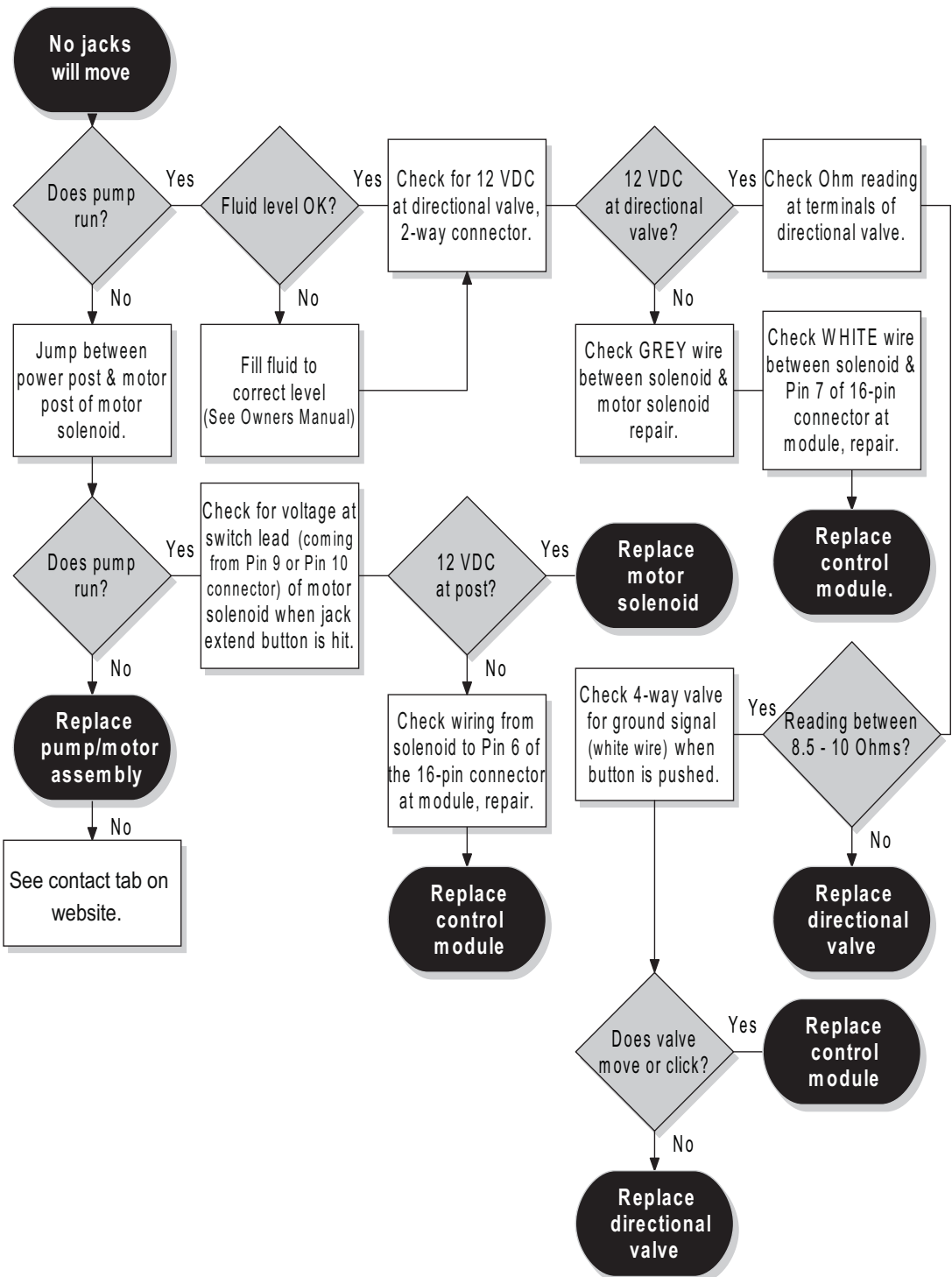
See contact tab on
website.

Check

www.powergeaus.com
for the latest manual &
tip sheet information



Fault Code 3



Check
www.powergearus.com
 for the latest manual &
 tip sheet information

