

Erosion/River/Channel Wear

STEER AXLE TIRES

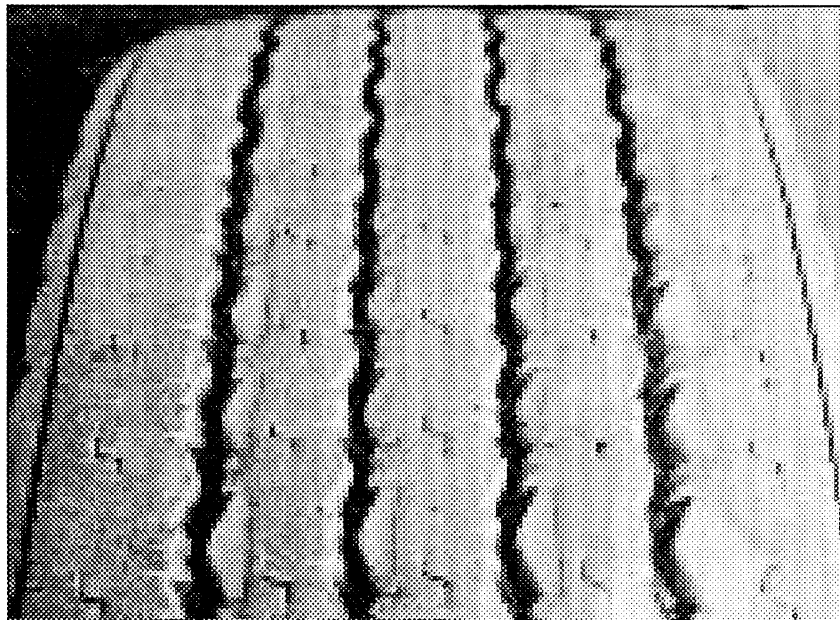
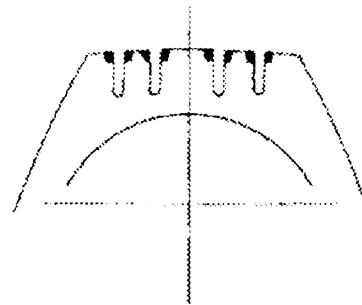
APPEARANCE

Circumferential wear along rib edges next to major tread grooves may be wavy in appearance and vary in width around tire.

PROBABLE CAUSE(S)

Characteristic of slow wear rate of radial tires on free rolling axles. May vary with individual tire tread design and construction. Common in line haul operations in which loads are light and turning is frequent.

EXAMPLE PHOTO & FIGURE



ACTION

TIRE

Erosion wear should not be of concern.

VEHICLE

None

OPERATIONS

None