

FEATURES & SPECIFICATIONS

2 0 0 5 Inspire **330**



COUNTRY COACH

THE WORLD'S FINEST MOTORCOACHES

Chassis Specifications

- **DynoMax® chassis:** semi-monocoque construction with 10" x 3" x ¼" (36') or 8" x 3" x ¼" (40') tube with welded components - 10,000 lb. Class III receiver hitch with electrical connector and chrome cover - 2-year/unlimited mile chassis warranty
- GVWR: 33,200 lbs.
- GCWR: 43,200 lbs.
- **Wheelbase:** 36' Siena – 229"; 40' DaVinci – 265"; 40' Genoa – 277"
- **Engine:** Caterpillar® C-9 8.8L 400HP with 1100 lb/ft torque at 1300 RPM - Alternator: 160 amps - 120-volt, 1,000 watt engine block heater - 5-year/100,000 mile engine warranty - Engine exhaust brake
- **Transmission:** Allison 3000 MH with PTO - Six speed automatic with two overdrive gears - Keypad electronic shifter with digital display - 5-year/unlimited mile transmission warranty (with TRANSYND® fluid)
- **Driveline:** Dana Spicer® 1710 Series
- **Suspension:**
 - **Front**—Holland/Neway® independent front suspension model IFS-114-CC rated at 13,200 lbs. GAWR with double wishbone construction and full air suspension system with electric manual dump, drum brakes, IPD anti-sway bar, and Koni adjustable shock absorbers
 - **Rear**—Holland/Neway® model ADL-120 rear air suspension system with electric manual dump and Koni adjustable shock absorbers

- **Drive axle:** Meritor® model RS-21145 rated at 20,000 lbs. GAWR with 4.88 differential ratio
- **Steering:** Fully-integral, full time hydraulic power steering gear with tilt and telescoping column
- Electronic cruise control
- **Parking brake:** Spring applied, air release on rear drum brakes
- Teleflex adjustable electronic throttle and brake pedal
- **Service brakes:** Full air brakes with ABS and automatic slack adjusters
 - 16.5" x 5" front axle
 - 16.5" x 7" rear axle
- **Tires:** Steel belted radials 11 R x 22.5 (6)
- **Wheels:**
 - **Front**—two 8.25" x 22.5" aluminum alloy wheels
 - **Rear**—two 8.25" x 22.5" aluminum alloy wheels and two 8.25" x 22.5" inner dual steel wheels
- **Battery:** One heavy duty 8D with 12-volt disconnect
- **Fuel capacity:** 110 gallon (dual fuel fills, driver and passenger sides)
- **Service center/storage box:** Diagnostic reader ports, circuit breakers and chassis battery disconnect
- Light with remote reel
- Emergency Roadside Service (First year paid by Country Coach)

Construction Highlights

- 102" wide body
- Tube steel cage structure
- Vacuum-bonded walls and floor with 1-1/2" expanded polystyrene insulation

- Fiberglass exterior with aluminum skirts and doors
- Exterior riding height: 12' 9" (including roof air)
- Finished interior height: 85"
- Interior width: 96-1/2"
- One-piece laminated fiberglass roof with steel tube framing and center-ducted roof A/C
- Steel framed slide rooms with sloped fiberglass roof for water drainage
- Laminated composite floor (two forward slides)

Driver Compartment Amenities

- 6-way power-adjustable driver and passenger seats with 3-point restraint and adjustable arms
- Driver seat sliding seat cushion and the passenger seat power footrest (must be ordered as part of Luxury Package)
- Custom contoured dash with burlwood trim on dash instrument panel
- Teleflex gauges: speedometer, tachometer, dual air pressure, oil pressure, transmission temperature, voltmeter, water temperature, fuel, odometer, trip meter
- Power Gear Auto Leveling panel
- Rear view monitor
- 18" SmartWheel® multiplexed steering wheel wrapped in leather. Equipped with controls for horn, head light with high beam and flash, marker light flash, cruise control and wiper functions
- Privacy drape
- Heating/cooling/defrost unit in dash

- Windshield wipers with delay and washers
- Wrap around windshield with shade band
- Electronic power sun visors
- Driver side window manual sun shade (must be purchased with Convenience Package)
- Passenger side control panels with step slide cover, porch light, ceiling lights, entry step, and domestic battery disconnect switches with battery switch indicator lamp
- Driver and passenger side map lights
- Side view mirror power controls
- Tile entry landing (must be purchased with Luxury Package)
- Interior entry door assist grip
- Cup holders
- Swing-out valet tray
- 12-volt dash fans
- Pre-wired for CB radio
- Non-skid entry steps

Front Entertainment

- Panasonic® 27" flat screen stereo TV in overhead dash
- Panasonic® AM/FM radio with CD player with two living room and two bedroom speakers
- 32" LCD high definition TV
- **Digital Projection Package:**
 - (Requires Luxury Package)
 - 68" projection screen TV
 - Remote control with one-touch automatic picture adjustment
 - Black-out shades
- Boosted cable antenna switch box
- Pre-wired for satellite dish

- KVH® in-motion satellite system and receiver
- Panasonic® four head VCR with remote control
- Panasonic® home theater system with CD changer, DVD and surround sound speakers (must be ordered as part of Luxury Package)

General Conveniences

- OnStar® RV navigation system
- Padded vinyl ceiling
- Florescent and incandescent lighting throughout
- Custom crafted oak cabinetry and woodwork
- Cherry cabinetry
- Maple cabinetry
- Knobs and pulls
- Decorative lighting in bedroom and living room
- Custom interior décor kit (preset)
- Power Gear 4-point computer assisted hydraulic leveling system
- Centrally located relay switches (all slide rooms)
- Intellitec EMS system monitor panel
- Pre-plumbed for optional washer/dryer
- Washer/dryer
- Telephone jacks
- Fire extinguisher
- Smoke detector
- Carbon monoxide detector
- LP gas detector
- Power step slide cover
- Entry door assist grip
- Stepwell light
- Tension mount day/night shade window shades in living/ dining area/bedroom

- Mini-blinds in galley/bathroom
- Fabric wrapped window treatments in living area
- Carpeted living room
- **Living area:**
 - Passenger side sofabed
 - Driver side occasional table and chair, or hide-a-bed (depending on floor plan)
- Ultraleather® sofa (passenger side)
- Hide-a-bed with air/spring mattress (driver side)
- Computer table (with euro recliner only)
- Factory delivery

Galley Amenities

- Convection/microwave with power hood and recirculation filter
- Advantium™ stainless steel Speedcook oven
- 3-burner cooktop with solid-surface cover
- 3-burner cooktop with oven
- 12 cu. ft. Norcold® 4-door 2-way refrigerator with ice maker
- Stainless steel 4-door refrigerator (must be ordered as part of Luxury Package)
- Custom solid-surface countertops with edge detail and tile backsplash
 - Solid-surface splashguard on end of galley countertops
- Stainless steel double-bowl sink with solid-surface covers
- Pantry
- Custom tile flooring on main floor and carpet in slide rooms
- Fantastic Fan® with rain sensor, automatic vent, remote switch and double dome

- **Dining area:**
 - Pedestal style wood dining table with two chairs
- Sleeper café dinette
- Additional folding chairs (2)

Bath Amenities

- Solid-surface countertop with edge detail and tile backsplash
- Porcelain vanity sink with coordinating fixtures
- Large vanity overhead with mirrored doors
- Decorative vanity bar light
- Towel ring, towel bar and toilet paper holder
- Water pump switch
- Fantastic Fan® with rain sensor, automatic vent, remote switch and double dome
- Etched glass shower enclosure
- Tub/shower combination (n/a on Siena floorplan)
- Handheld shower unit
- Skylight in shower
- Pocket privacy doors
- Custom tile flooring
- Mini-blinds with fabric valance on bath window

Bedroom Amenities

- Queen-size bed
- Upholstered headboard
- Bedspread with custom accessory pillows
- Sliding mirror wardrobe
- Carpeted floor
- Clothes dresser
- Tension-mount day/night shade window treatment

- Fabric wrapped window treatments
- 20" Panasonic® TV with remote control
- Phone jack
- Lighted wardrobe
- Wall sconce lighting

Heating and Cooling Systems

- 35,000 BTU and 20,000 BTU LPG furnaces
- (2) 13,500 BTU Coleman® low profile roof A/C's
- Roof A/C's with heat pumps (2) (must be ordered as part of Luxury Package)
- 15K BTU A/C upgrade with heat pump
- **Dash area:**
 - Heating and A/C system (45,000 BTU heating and 17,000 BTU cooling)

Power Sources

- Onan® 7.5kW Quiet Diesel generator with remote start/stop
- 2000-watt solid-state inverter and 100-amp solid-state converter/charger with 15-amp chassis battery charge system
- Four 6-volt house batteries with disconnect switch
- 50 amp shore cord
- Manual shore cord reel (must be ordered as part of Convenience Package)
- 30 amp adapter
- 50 amp shore service surge protector

Plumbing Features

- Atwood 10 gallon gas/electric water heater
- City water to water tank fill located in plumbing bay

- 12-volt on demand water pump
- Water filtration system
- Pre-plumbed and pre-wired for washer/dryer
- Black water tank flush system
- Water pump switch in bath area
- Electronic tank monitoring system
- Heated and insulated fiberglass plumbing bay
- Sewer hose storage
- Exterior hot/cold running water with spray fixture in plumbing bay

Tank Capacities

- 99 gallon fresh water tank
- 53 gallon black water storage tank
- 69 gallon gray water storage tank
- 31 gallon LP tank
- 110 gallon diesel fuel

Exterior Conveniences

- Powder-coated steel frame entry door
 - Power lock
 - Keyless entry
 - Screen door
- Electric entry doorstep with automatic override at ignition
- Omnidirectional TV antenna with coaxial cable and 12-volt boost
- Chrome, heated, dual remote control cab mirrors
- Awning package (patio, entry door, bedroom window and all slide rooms)
- Carefree power electric patio and door awnings with remote and wind sensor (must be ordered as part of Convenience Package)
- Girard power patio box and entry door awnings with remote and wind sensor

- Roof mounted chrome dual air horns
- Exterior plumbing bay with manual dump valves, holding tank rinsing system (waste only) and hot/cold faucet with handheld shower wand
- Exterior bay cable TV and telephone hookups
- 120-volt receptacle
- Lighted entry door assist grip
- Large halogen headlights
- Fog lamps
- Four curb lights
- Marker lights
- Patio light
- Double pane windows
- Lighted storage bays with carpeted liners and insulated aluminum bay doors
- Dual directional bay storage tray (must be ordered as part of Convenience Package)
- High quality clear-coat exterior with chip-guard paint-protection coating on wheel-well flare
- Exclusive paint design (4 color schemes)
- 3M nose protectant
- Two fuel cap holders
- Engine light with remote reel
- Ladder (must be ordered as part of Convenience Package)
- Full rear mudflap (must be ordered as part of Convenience Package)

Slide-Out Room Special Features

- Power Gear electric slide-out hardware with automatic brake
- Steel framed vacuum-laminated slide rooms with fiberglass roofs

- Awnings extend/retract with slide rooms
- Flat floor living room
- Centrally located switches for slide room controls

Options Summary

○ **Luxury Package:**

- Roof A/C's with heat pumps (2)
- Driver seat sliding seat cushion and the passenger seat power footrest
- Panasonic® home theater system with CD changer, DVD and surround sound speakers
- Stainless steel 4-door refrigerator
- Tile entry landing

○ **Digital Projection Package:**

- (Requires Luxury Package)
- 68" projection screen TV
- Remote control with one-touch automatic picture adjustment
- Black-out shades

○ **Convenience Package:**

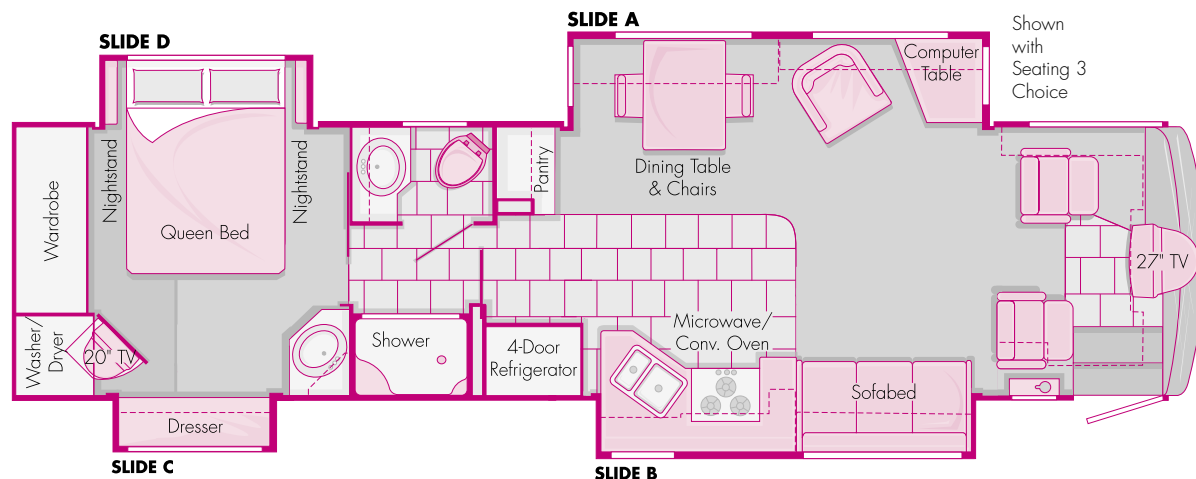
- Driver side window manual sun shade
- Carefree power electric patio and door awnings with remote and wind sensor
- Ladder
- Dual directional bay storage tray
- Full rear mudflap
- Manual shore cord reel

■ **Individual options**

- Cherry cabinetry
- Maple cabinetry
- Custom interior décor kit (preset)
- 32" LCD high definition TV
- KVH® in-motion satellite system and receiver

- Advantium™ stainless steel Speedcook oven
- Washer/dryer
- Tub/shower combination (n/a on Siena floorplan)
- Ultraleather® sofa (passenger side)
- 15K BTU A/C upgrade with heat pump
- Hide-a-bed with air/spring mattress (driver side)
- Computer table (with euro recliner only)
- Sleeper café dinette
- Additional folding chairs (2)
- 3-burner cooktop with oven
- OnStar RV® navigation system
- Girard power patio box and entry door awnings with remote and wind sensor
- 3M nose protectant
- Factory delivery

2005 Inspire **330** Floorplans



36' *Siena*

Designed to take advantage of the capabilities of the Inspire's modular platform, the Siena is available as a double, triple or quad slide. Discover the amazing way the Inspire brings livability into a more manageable space!

SLIDE-OUT ROOM DIMENSIONS

FLOORPLAN	SLIDE-OUT	WIDTH	DEPTH	HEIGHT
36' Siena	Living room	12'-3"	2'-8"	6'-4"
	Galley	11'-1"	1'-8"	6'-3"
	DS Bedroom	6'-1"	2'-0"	5'-3"
40' DaVinci	PS Bedroom	4'-7"	1'-6"	5'-8"
	Living room	12'-3"	2'-8"	6'-4"
40' Genoa	Galley	12'-8"	1'-8"	6'-3"
	DS Bedroom	6'-1"	2'-0"	5'-3"
	Living room	12'-3"	2'-8"	6'-4"
40' Genoa	Galley	12'-8"	1'-8"	6'-3"
	DS Bedroom	7'-0"	2'-0"	5'-3"

PS Bedroom = Passenger Side Bedroom • DS Bedroom = Driver Side Bedroom

Siena's Available Options:

Double Slide: **A, D**

Triple Slide: **A, D, (B or C)**

Quad Slide: **A, B, C, D**



SEATING 1

Seating Choice Available on the 36' Siena Only (Excluding Floorplans with B Slide)



SEATING 2

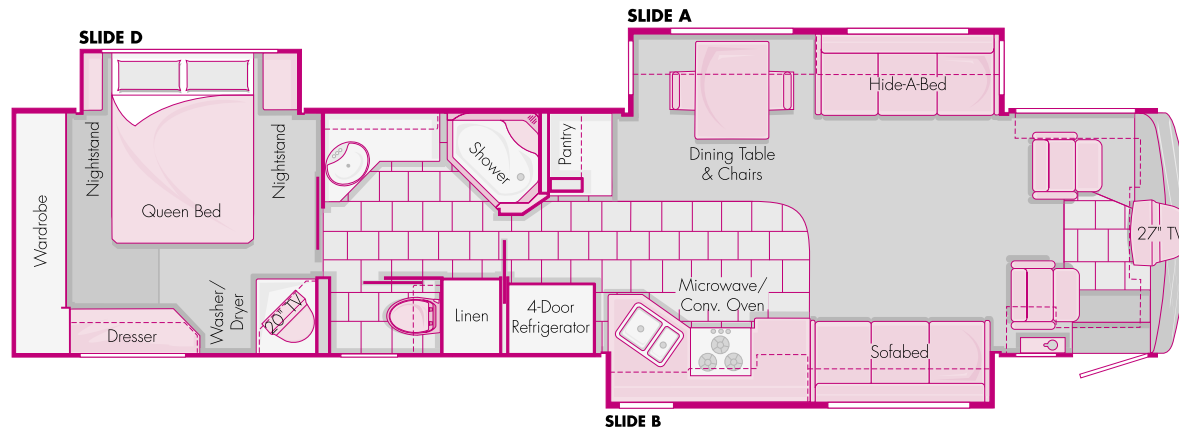
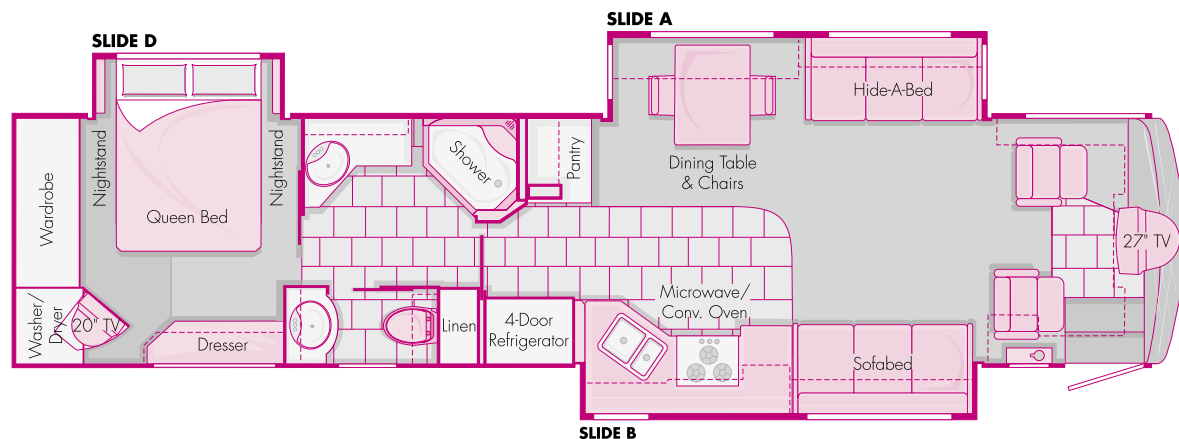
Seating Choice for Slide A, All Models



SEATING 3

Seating Choice for Slide A, All Models

2005 Inspire 330 Floorplans



SEATING 1

Seating Choice Available
on the 36' Siena Only
(Excluding Floorplans
with B Slide)



SEATING 2

Seating Choice for
Slide A, All Models



SEATING 3

Seating Choice for
Slide A, All Models

40' DaVinci

The DaVinci is designed to further explore the capabilities of the Inspire platform. The DaVinci floorplan offers residential features like solid surface countertops and dual bathroom sinks.

40' Genoa

The Genoa is a triumph in the combination of livable space and luxurious amenities. Enjoy wide, tall slide rooms, ample storage and multifunction spaces for all your lifestyle may require.



COUNTRY COACH

210 East Sixth Avenue
Junction City, Oregon 97448

800-654-0223
www.countrycoach.com

IMPORTANT NOTICE: Country Coach does not represent or warrant that its motorcoaches can lawfully be operated on all roads or in all states. Laws restricting the length, width, and/or weight of vehicles vary from state to state. Depending on the model, some Country Coach motorcoaches (as well as similar sized motorcoaches used on such roads or in such states with special permits or license endorsements). It is the responsibility of each prospective purchaser of a motorcoach to determine any limitations or restriction on the use of the motorcoach in the states in which the purchaser intends to use it.

Due to constant product improvements, styling, design, equipment and construction are subject to change without notice or obligation. We reserve the right to make changes, but are happy to verify any item on request. **Some items featured may be optional.**

11K/0604