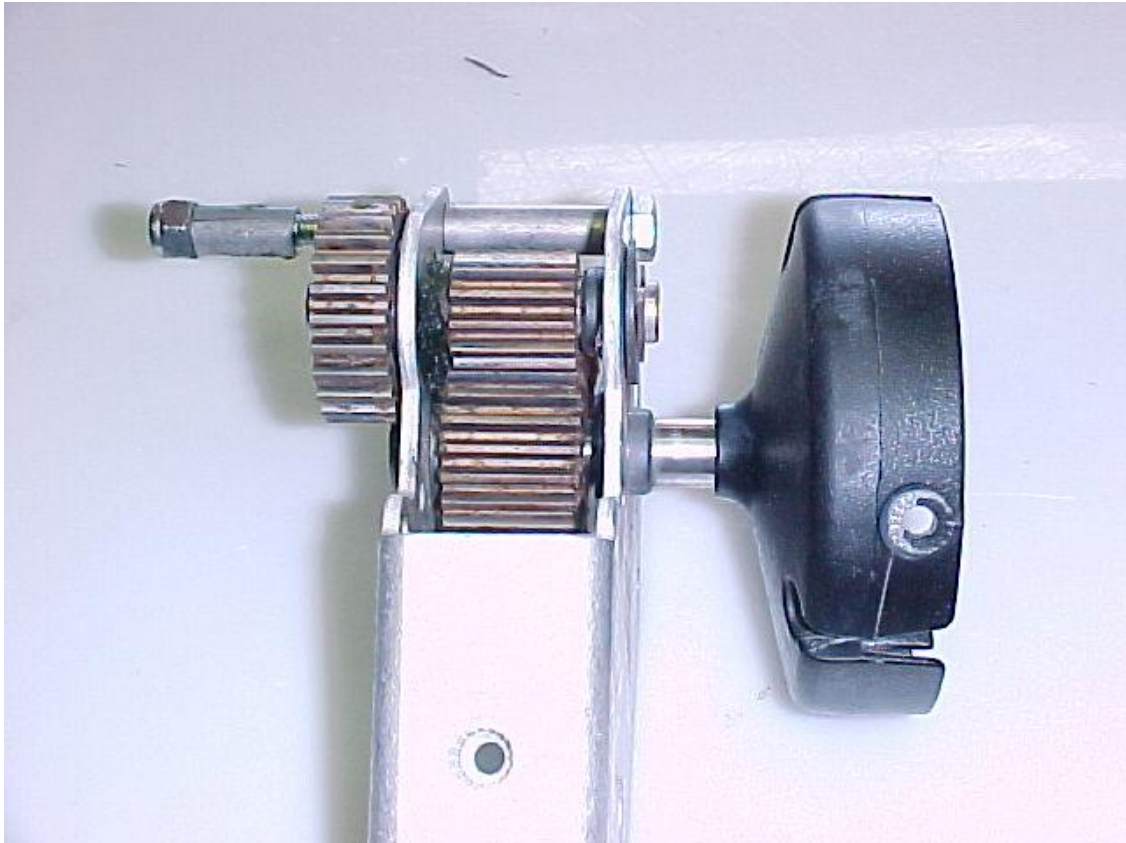
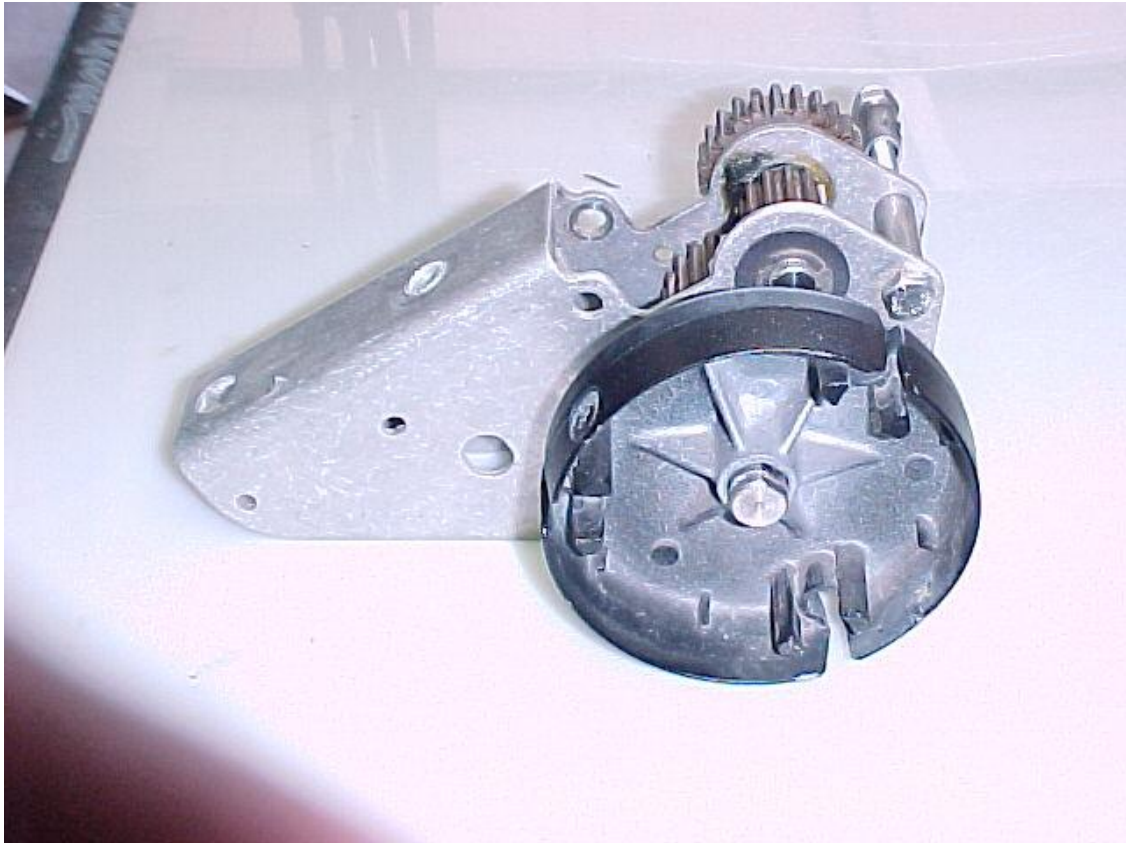


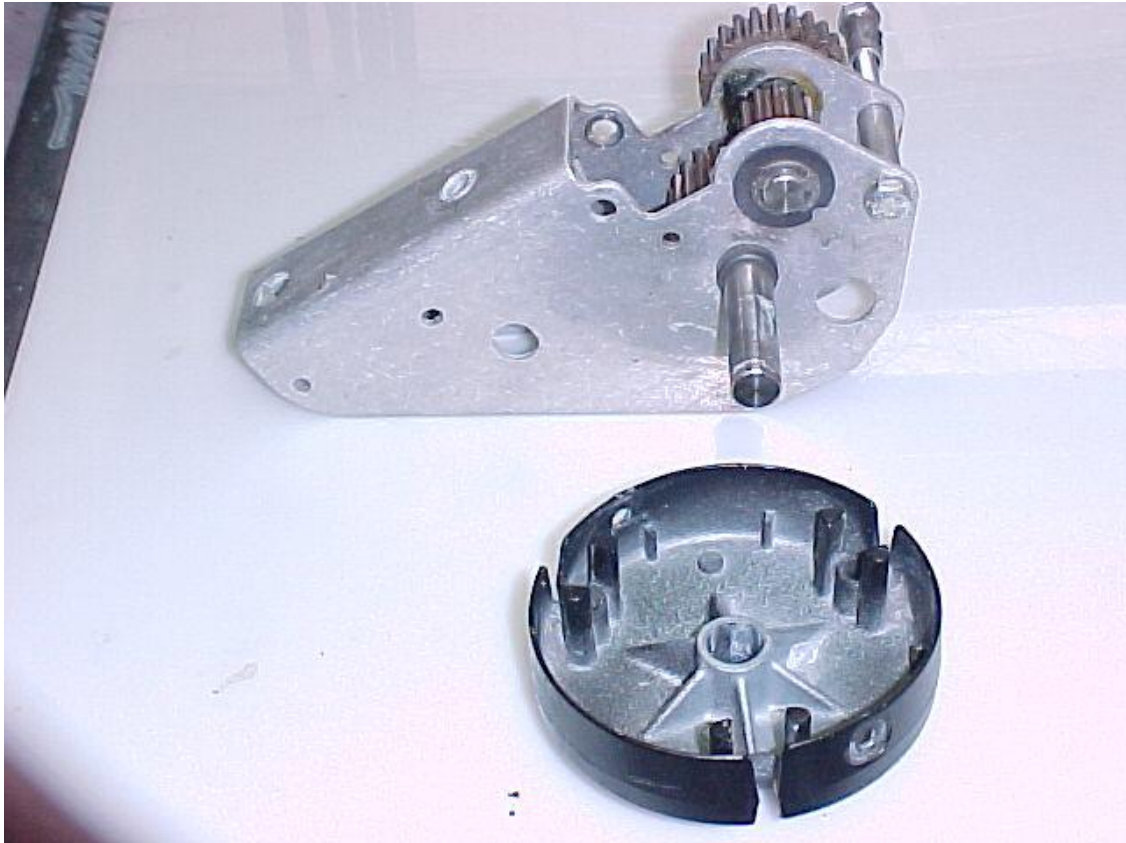
Carefree Of Colorado Electric Patio Awning Gear Pack



This gear pack is located inside the black plastic enclosure on the front awning arm. The drive motor in this picture has been removed. The bolt on the left side of the gear pack is one of three that the motor is bolted on with. The black bell shaped cap is attached to the awning tube the awning material rolls onto.



Another view of the bell cap.



Bell cap removed from gear pack shaft.



Note the flat area on the shaft. This mates up with a flat on the inside of the bell cap sleeve. (See next picture) This is supposed to keep the shaft and bell cap rotating together.

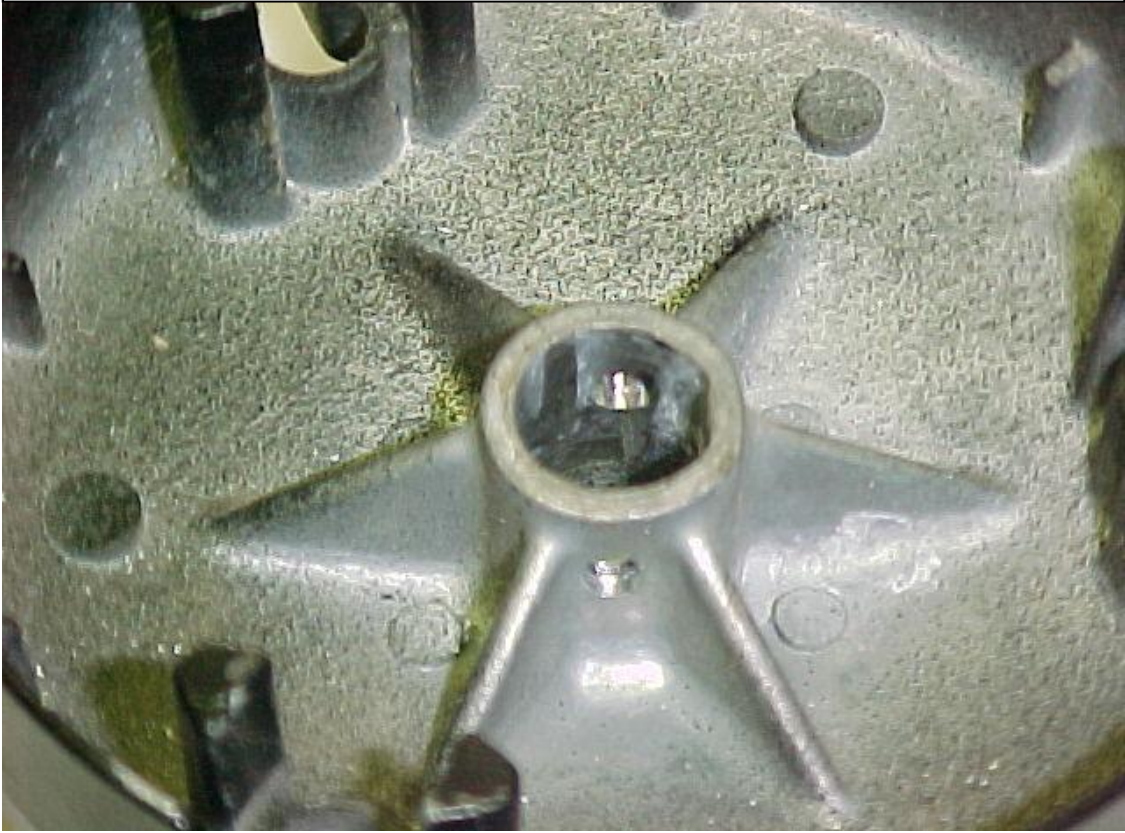


The Flat is barely visible due to the shaft turning inside the sleeve and wiping out the flat.



A closer view.

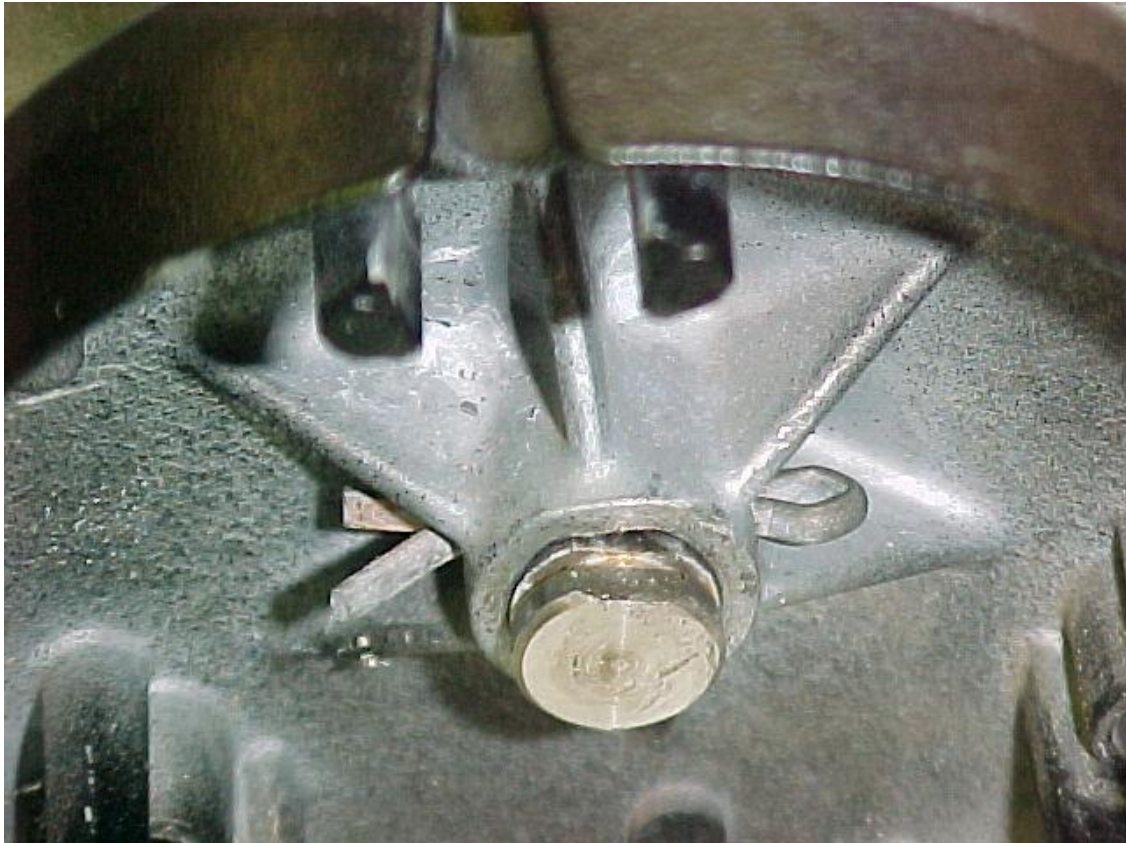
The Fix.



Drilled two 1/8" holes into the sleeve a crossed from each other. This can be done by inserting the drill bit through the holes used to attach the bell cap to the tube. The holes will be at a slight angle but won't hurt anything.

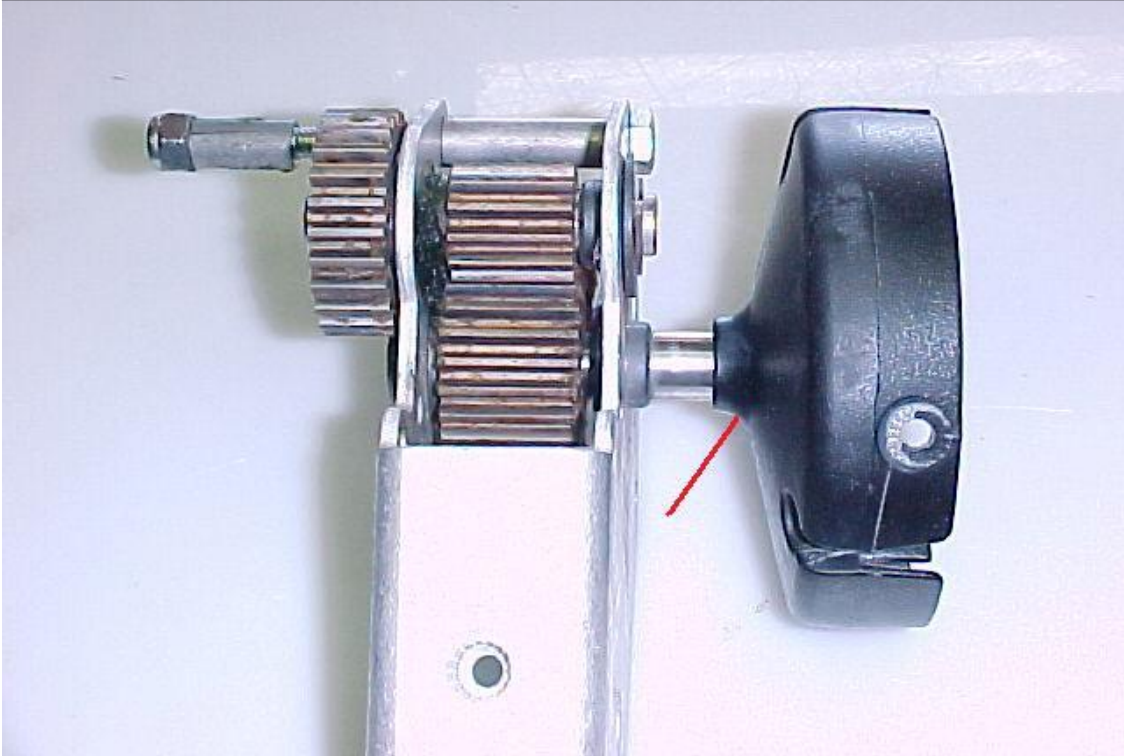


Slide the bell cap back onto the shaft and mark the shaft where the new holes in the sleeve are. This can be a little tricky. Center punch the shaft and drill a 1/8" hole through the shaft.



Install bell cap on shaft and install a 1/8" cotter pin through the holes. Reinstall gear pack on the awning.

Another fix that is easier to do but not as professional looking.



With the awning open and standing on a ladder from underneath the awning, Drill a 1/8" hole through the bell cap into the shaft. Try to hit the center of the shaft as close as possible. Drill the hole approx. 3/8" to 1/2" deep. Install a #10 self-drilling screw in the hole.