

Our cust # 21759
Steven Patrick Hill

Thor Motor Coach Technical Service Bulletin 11-002



TSB #

TSB 11-002

Description/Title:

Sealing the Exterior Mirrors and Sidewall Top Tubes

Affected Product Line(s):

Certain Serrano motorhomes with an offline date 10/22/2008 thru 5/4/2011.

Service Campaign # :

RC000036

Released Date: 6.3.2011

Failure Code:

TMCTS80243W

Document Date: 6.3.2011

Time Allowed:

1.5 hrs

Document Revision: A

AFFECTED UNITS: Certain Serrano motorhomes with an offline date 10/22/2008 thru 5/4/2011.

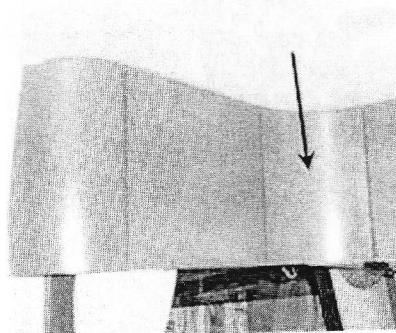
SUMMARY: Certain units in the affected offline date range will need to have the exterior mirrors and sidewall top tubes sealed to prevent possible water infiltration.

PARTS REQUIRED: Great Stuff expanding spray foam, and Geocell 2300MHRV clear sealant. These sealants may be purchased at a local hardware supply store.

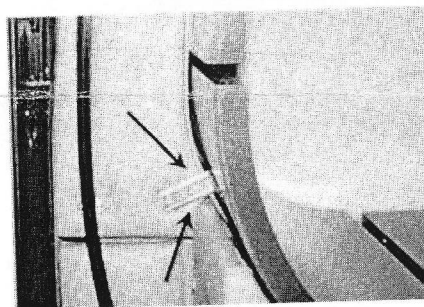
DIRECTIONS:

Top Tube of the Sidewall

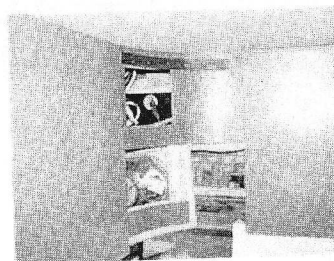
1. Remove the indicated side front overhead panel by doing the following:



- A. Remove the screws from the L brackets that attach the panels to the side padded pieces. The top of the panels are held in place by velcro and/ or pin nails.

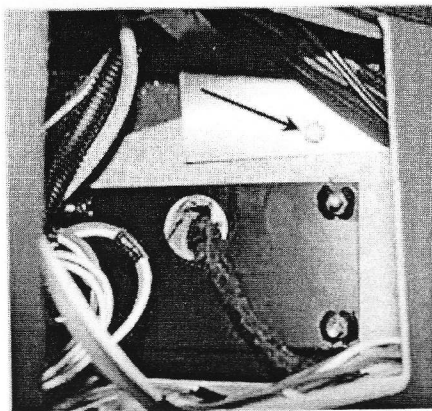


Once the panel is removed, the overhead should look like the picture to the right.

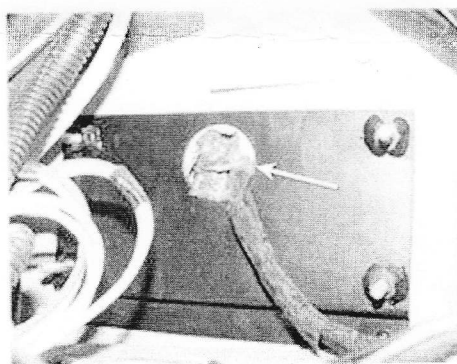


2. Remove the bolt that attached the front overhead bracing to the sidewall.

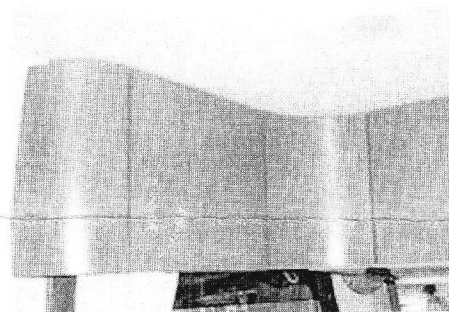
3. Insert the tube that comes with the expanding spray foam can into the bolt hole and fill the front of the tube with the foam.



4. Use expanding spray foam to seal the opening where the mirror wires go into the mirror.
5. Repeat steps 1 thru 4 on the opposite side of the coach.



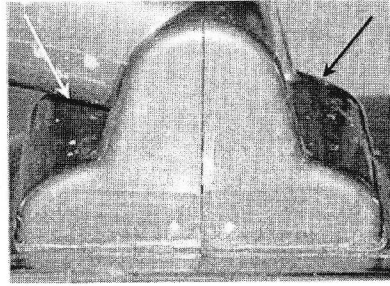
6. Re-install the side front overhead panels.



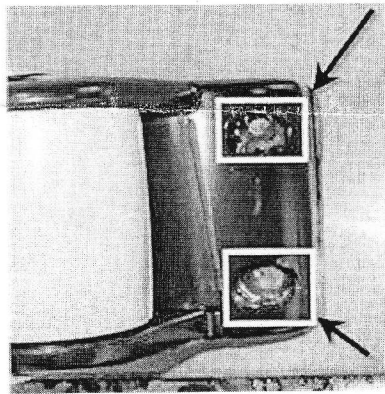
Please note: A water leak along the side radius may drip into this tube and may show up as a cockpit window or mirror leak.

Exterior Mirrors

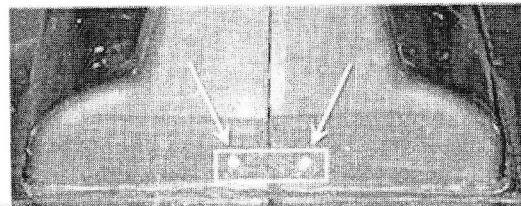
1. Remove the outer plastic mirror base cover.



2. Remove the 2 of the mirror mounting bolts.
3. Apply silicone sealant to the bolt holes.
4. Reinstall the mirror mounting bolts.
5. Repeat for the remaining mirror mounting bolts.



6. Drill two 1/8" weep holes in the bottom of the cover
7. Reinstall the outer mirror base cover



8. Seal around the mirror base where it meets the sidewall.
9. Repeat steps 1 thru 8 on the opposite side of the coach.

