

*2004 Alpine Coach
Limited*



America's Premium Motor Coach



QUALITY AND COMFORT: IT'S A TRADITION!

1



2



3



4



5



6



Like the strong foundation of our family owned business, Western Recreational Vehicles, Inc. has been building some of the toughest, most reliable Motor Coaches, Fifth-Wheels and Truck Campers for over three decades. We understand that tradition is the key to creating premium quality recreational vehicles year after year. We take pride in using state-of-the-art design and technology to build the luxurious Alpine Coach. Along with high quality and comfort, other top priorities include: safety, attention to detail, premium features and customer satisfaction.

Our Western RV family believes trust and experience go a long way. Our more than 32-year commitment to quality, comfort and reliability is a family tradition. So no matter where your journey takes you, trust our family to be there for your family.



1. Carefree® Powervisors® are standard, offering push-button control for more convenient sunglare protection and driving comfort.
2. Audio and video components are neatly positioned and centrally located.
3. 21.5 cu. ft. Amana® Residential Refrigerator option.
4. The power management controls and Accu-Gauge® tank monitor readout pad are conveniently located and out of sight when not in use.
5. Model 40 FDTs • Kenmore® stacked Washer/Dryer with Item Shelf and Vintage Cherry Cabinetry options.
6. Model 36 MDDS • Galley with Atwood® 22" Gas Oven option and Natural Maple Cabinetry.

Western Recreational Vehicles, Inc. is proud to introduce the new generation of Motor Coaches, the 2004 Alpine Coach – America's Premium Recreational Vehicle. We're passing on our tradition of first-class quality, comfort and convenience in every Alpine Coach.

*2004 Alpine Coach
Limited*



MODEL 40 FDTS • Woodlands Interior with Heritage Cherry Cabinetry, Solid Surface Dinette Table, Atwood® 22" Gas Oven, 21.5 cu. ft. Amana® Residential Refrigerator, Flexsteel® Ultra-Leather Recliner, Porcelain Tile and Padded Vinyl Ceiling options.





LIVE AND DRIVE IN FIRST-CLASS COMFORT.



MODEL 40 MDTs

Brandywine Interior with Natural Cherry Cabinetry, 37" Panasonic® Plasma Television, Solid Surface Dinette Table, Flexsteel® Ultra-Leather Recliner, Porcelain Tile, Flexsteel® Ultra-Leather Buddy Seat with Power Footrest and Padded Vinyl Ceiling options.

Even before you sit behind the wheel of an Alpine Coach, it's easy to see the first-class comfort and style. With each year Western Recreational Vehicles, Inc. surpasses even our own high expectations of excellence. We take pride in building America's premium recreational vehicles.

When you travel in a 2004 Alpine Coach, it's like taking all the luxuries and comforts of home along. The Coach offers a variety of first-class features, including spacious rooms, oversized windows, generous headroom, handcrafted hardwood cabinetry finished with residential hardware and much more.

So no matter where your adventures lead, you'll be driving in first-class comfort in an Alpine Coach.

MODEL 40 MDTs • Brandywine Interior, 37" Panasonic® Plasma TV, Ultra-Leather Buddy Seat and Integrated 3-Point Seat Belt options.



Extra-wide and comfortable Ultra-Leather Buddy Seat with Power Footrest, 8-way Power Adjustment and 3-Point Seat Belt option.

With each new Alpine Coach, we take the time to design and build it with care and ingenuity. From the elegant Flexsteel® premium grade furniture to plush Fabrica® residential grade carpeting, the Coach's interior design shows off your own personal fashion and flair.

The Alpine Coach has been named in national publications as the motorhome "that drives like a european sports sedan," is "...one fine driving machine" and "...it looks and feels like it should cost even more..." See for yourself what everyone is talking about and head to your local dealer for a test drive. Take a trip around the block and you'll want to take a trip across the country.



A valuable feature for 2004 is the push button electronically operated recessed stepwell cover. Electric activation eliminates freeze-ups common to air activated covers. When the step isn't needed, it's out of sight. (Front door models only)



New for 2004! Easy reading white background and backlit gauges with classic wood grain dash and steering wheel insets. Shown with standard Smart Wheel®.



Pull-out dash drawer with cup holders and coach body function switches for an uncluttered cockpit.

2004 Alpine Coach
Limited



REST IN COMFORT AND LUXURY.



MODEL 40 FDTS • Woodlands Interior with Heritage Cherry Cabinetry and Padded Vinyl Ceiling options.

MODEL 34 FDSS • Willow Bay Interior with Tuscan Maple Cabinetry.



The comforts of home don't stop in the living room or galley; our engineers have designed unique sleeping and bathroom areas with you in mind. You're sure to sleep comfortably in the spacious master suite, equipped with a full 60" x 80" queen-size, or in our 40 FDTs floor plan, a full 76" x 80" king-size Discovery by Bodyrest® deluxe pillow-top inner spring mattress designed for standard fitted sheets. The convenient cedar-lined wardrobe, combined with drawers, offer an abundant amount of space for your personal items. You'll always travel and rest comfortably in an *Alpine Coach*.

MODEL 40 MDTs • Shown with Natural Cherry Cabinetry option.



Alpine Coach owners have always appreciated the custom design and elegance the spacious bath area has to offer. It features a fully enclosed shower, quality satin nickel finish residential plumbing fixtures, a large insulated skylight and a one-piece Karadon® Solid Surface Vanity polished to an appealing high lustre.



Folding Shower Seat option for personal comfort.

Quality satin nickel finish shower hardware and insulated skylight. An optional tub/shower combination is available.



A large Vanity Make-Up Counter with Karadon® Polished Solid Surface is standard in all 38 and 40 foot floor plans.



Karadon® Solid Surface polished and oversized Vanity Top.

2004 *Alpine Coach Limited*



BEAUTY SPEAKS FOR ITSELF.

Exterior Features

While the Alpine Coach's interior is magnificent, the exterior is just as impressive, both in appearance and durability. The exterior is built to last and endure any type of weather. Alpine Coach offers five Premium Exterior Color Groups in a striking transitional design as a standard feature.



The optional A&E Power Pro® Fabric Awning with Wind Sensor will automatically retract to reduce the chance of wind damage and can be calibrated to your preference depending on the windspeed at your location. A small handheld remote allows operation without having to enter the coach.



The standard Premium Exterior Color Group design is carried around the slide room end walls providing a continuous and coordinated graphic effect with the slide rooms in the extended position.



Autumn Tan Premium Exterior



The retractable fueling compartment is designed to eliminate the impact of accidental overfills and provide security for your fuel system. Also built into this handy area is a serviceable 7.5 kw Onan® Quiet Diesel generator.

Shadow Ebony Premium Exterior with A&E Power Pro® Awning, Winegard® Satellite Dish and Cummins® 8.9 ISL 400hp engine options.



Two-piece "bus style" urethane set windshields seal tighter than rubber gasket applications. Standard forward mounted, chromed, heated and remote controlled mirrors create a larger field of vision for added safety.



Automotive style integrated tail and auxiliary lower backup lights aid in vision and safety. A specially designed spoiler helps to direct air over the rear cap to minimize road grime from adhering to the cap surface.



A special bracket is mounted to the roof for antennas and air horns eliminating additional holes and minimizing the chance of water intrusion. Notice that the bracket is also located back from the front of the coach to minimize wind noise while in transit.



Pass through storage bays are spacious and equipped to handle all of your necessities.



Solarcool mirror-tinted thermal panel windows are standard and increase privacy and insulation.



An optional Gledinning® Power Cable Reel simplifies electrical hook-up and provides fast and reliable coiling for efficient cord storage.

Alpine's sanitation station is packed with premium features; black tank flush, pressurized hot/cold faucet and showerhead, light, soap dispenser, paper towel holder and connections for 50 amp service, cable TV, city water and telephone.



Integrated into the rear cap, is a locking access door that allows an easy visual check of coolant, power steering fluid and belts, as well as an easy to reach engine oil fill. All in a neatly designed and finished area.

2004 Alpine Coach Limited

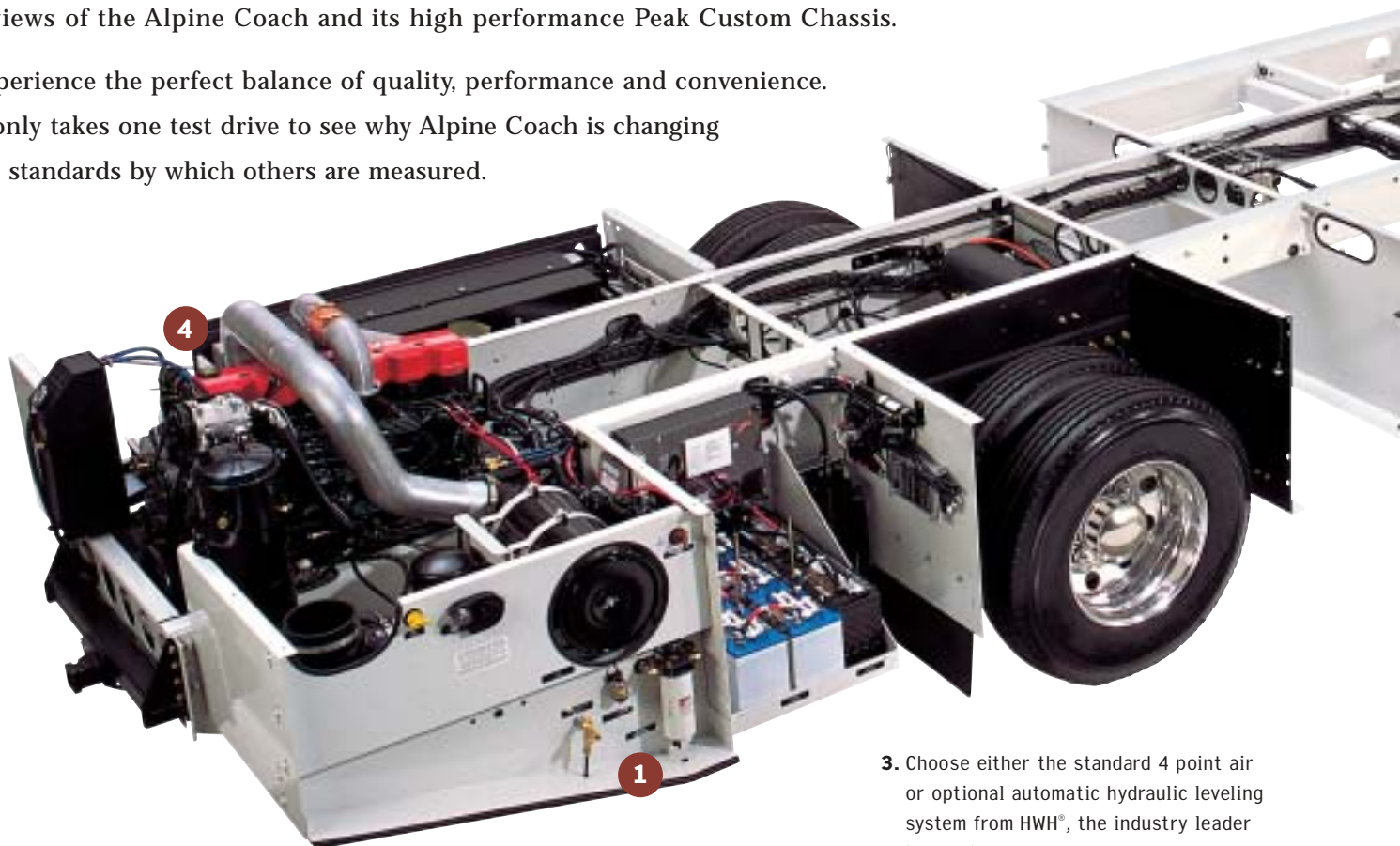


PERFORMANCE AND PROTECTION.

When it comes to drivability, Alpine Coach will exceed your expectations with its own Peak Custom Chassis. Our philosophy is simple: Build a coach with handling characteristics reminiscent of a European touring sedan. From the oversized Toyo® tires that deliver supreme traction and braking, to the powerful 8.3 ISC and 8.9 liter ISL Electronic Cummins® diesel engines, every detail was examined to make the Alpine Coach the finest and safest Premium Coach in its class.

Please see your dealer or contact Western Recreational Vehicles for copies of recent product reviews of the Alpine Coach and its high performance Peak Custom Chassis.

Experience the perfect balance of quality, performance and convenience. It only takes one test drive to see why Alpine Coach is changing the standards by which others are measured.

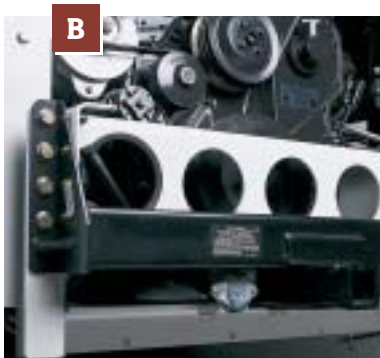


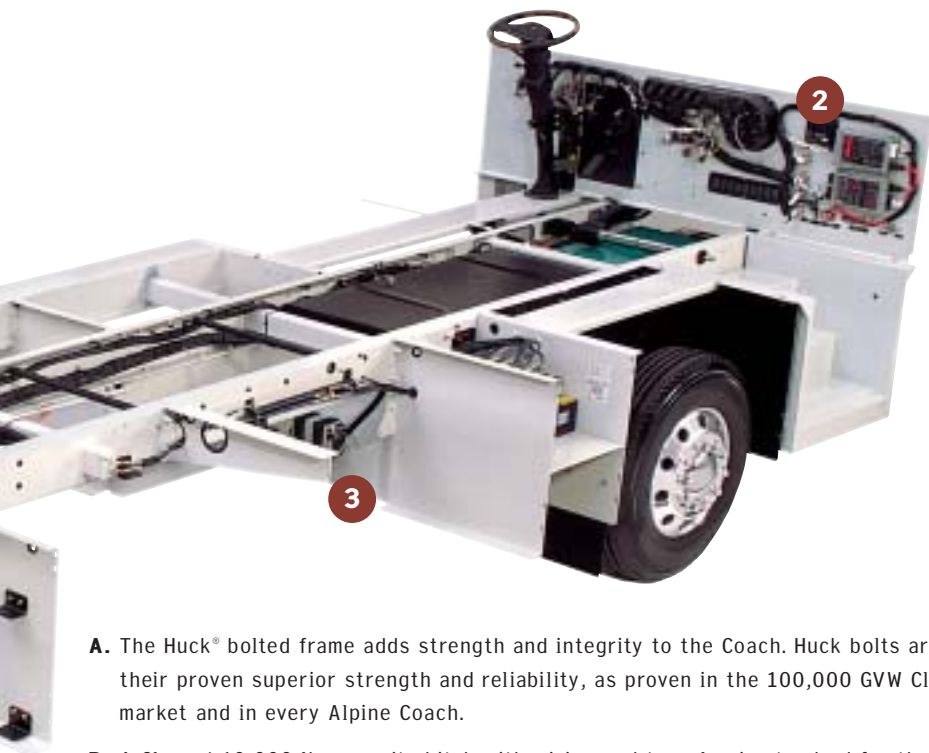
1. The engine maintenance center allows access to check engine oil, transmission fluid level, service of air filter, fuel filter, auxiliary air coupler and automotive diagnostic link.

2. Every electrical connection is well labeled, coded and harnessed. The use of aircraft and automotive connectors make this system virtually fail-safe.

3. Choose either the standard 4 point air or optional automatic hydraulic leveling system from HWH®, the industry leader in leveling systems.

4. The cooling system for the Cummins® diesel engine earned high honors by passing the strict Cummins® Engine Company test #AEB 90.24 cooling, a critical consideration when purchasing a diesel pusher motor coach.





A. The Huck® bolted frame adds strength and integrity to the Coach. Huck bolts are utilized for their proven superior strength and reliability, as proven in the 100,000 GVW Class 8 truck market and in every Alpine Coach.

B. A Class 4 10,000 lb. capacity hitch with wiring and tow plug is standard for the tow vehicle of your choice.

C. The Vansco® Power Net Electrical System is fully multiplexed with auto-reset fuses. This state-of-the-art streamlined system allows easier and more accurate troubleshooting and helps to alleviate added weight caused by additional wire, relays and fuses.

D. Two Group 31 Interstate® maintenance free chassis starting batteries provide 660 Cold Cranking Amps, and are grouped with 6 powerful Interstate® 6-volt house batteries offering a total 732 amp. hours of service for maximum performance and extended usage.

E. Peak Chassis boasts one of the best handling air suspension systems. It includes Neway's® heavy-duty custom tuned "active" air ride suspension, Bilstein® heavy-duty self-adjusting gas shocks, Toyo® high performance all steel radials, IPD 15/8" diameter front anti-sway bar and four ride height control valves to constantly monitor and react to changing road and weight conditions at each wheel. When you combine the above suspension systems with one of the best weight distributed coaches in the industry (40% front and 60% rear) you know you have invested in a great driving machine!

F. Safety and automotive feel were two leading factors when 15 inch ABS disc brakes were engineered into the Peak Chassis. According to the FMVSS 105 Brake Performance Test, Alpine Coach exceeded the requirements with "a minimum 24% factor of safety at maximum gross vehicle weight" at the Bosch® Automotive Proving Grounds. It is comforting to know this is the same style of performance braking system used in critical applications for airplanes, Nascar® and Indy race cars.

G. The side mounted all steel and aluminum radiator is engineered for greater cooling and longevity than others that use common plastic parts. The side mounted muffler system helps to achieve a 10-degree departure angle that won't drag on driveways like rear mounted models.

H. Teleflex® adjustable throttle and brake pedals are standard, and move with the push of a button to meet your requirements for increased driving comfort and added safety. The automotive inspired hanging pedal design provides the same type of familiar pedal movement you are accustomed to in your own car.



2004 Alpine Coach Limited



2004 SPECIFICATIONS

Peak Custom Chassis

34' 36' 38' 40'

Cummins® 8.3 ISC 350 hp, 1,050 ft/lbs torque w/PAC® Exhaust Brake	s	s	s	s
Cummins® 8.9 ISL 400 hp, 1,200 ft/lbs torque w/Jacobs® 2 Stage Compression Brake	o	o	o	o
Allison® 3000MH 6 speed World Transmission	s	s	s	s
Meritor® MFS144 wide track front axle, 50° turn angle w/self lubricating hubs and stemco visual seals	s	s	s	s
Meritor® RS19145 rear axle w/quiet gearing and 4.63:1 gear ratio	s	s	s	s
Wabco® four wheel antilock brakes	s	s	s	s
Meritor® high performance 4 piston/caliper hydraulic vented disc brakes	s	s	s	s
Meritor® full wheel air brakes w/auto slack adjusters and ATC (credit)	o	o	o	o
16.5" x 7" drum-style s-cam park brake	s	s	s	s
12" x 4" drive line drum park brake, spring applied, air release	s	s	s	s
Heavy-duty cross-flow side mounted radiator w/variable speed hydraulic fan	s	s	s	s
10 cubic inch ACME® R-134A air conditioning compressor	s	s	s	s
160 amp Leece-Neville® alternator	s	s	s	s
2 Interstate® 660 CCA @ 0°F maintenance free starting batteries	s	s	s	s
Vansco fully multiplexed electrical system w/auto-reset fuses	s	s	s	s
9" raised rail ladder constructed chassis frame, 50,000 psi steel, Huck® bolted together	s	s	s	s
Full steel wheel wells w/undercoating	s	s	s	s
100 gallon fuel capacity	s	s	s	s
Heavy duty R.H. Sheppard® M-100 steering gear, 14,000 lb. rated w/18.9:1 ratio	s	s	s	s
Neway® heavy duty custom tuned 4 wheel "active" air ride suspension system	s	s	s	s
Bilstein® high performance heavy duty gas pressurized self adjusting shocks	s	s	s	s
IPD® 1 5/8 diameter front stabilizer bar	s	s	s	s
Toyo® 11R 22.5 "H" rated high performance steel radial tires	s	s	s	s
(4) Polished 8.25 x 22.5 aluminum wheels w/inner dual steel wheels, trim kit and valve extenders	s	s	s	s
Bendix® heavy duty AD-9 heated air dryer w/automatic moisture ejector	s	s	s	s
Nelson® replaceable air filter	s	s	s	s
Air filter restriction indicator	s	s	s	s
Douglass® tilt-telescoping steering column	s	s	s	s
Electronic cruise control w/high idle	s	s	s	s
Teleflex® suspended-adjustable brake and accelerator pedals	s	s	s	s
VIP® leather-burlwood back-lit steering wheel, 18" diameter	s	s	s	s
Air suspension deflation system	s	s	s	s
Air conditioning condensor	s	s	s	s
Front and rear mud flaps	s	s	s	s
HWH® fully automatic air leveling	s	s	s	s
HWH® fully automatic 4 point hydraulic jack leveling	o	o	o	o
Valley® 10,000 lb. rated tow hitch w/6 way tow plug	s	s	s	s
Full width & length vibration dampner system between coach & chassis	s	s	s	s
HWH® self synchronizing room slide-out systems	s	s	s	s
Kwikkee® electric generator slide-out	s	s	s	s
Chassis battery disconnect switch	s	s	s	s
Onan® 7.5 KW quiet diesel generator set	s	s	s	s
Chassis service center including: engine diagnostic port, auxiliary air supply, remote fuel filter, engine and transmission dipsticks, remote 20' light and air cleaner access	s	s	s	s
Integrated electric stepwell cover (front door models only)	s	s	s	s
Borg Warner® electronic gauge package	s	s	s	s

Body Construction / Exterior

34' 36' 38' 40'

Laminated/vacubonded 6005 T5 aluminum tube structure: 2" walls, 2.25" floor, 5.25" roof	s	s	s	s
One-piece fiberglass roof	s	s	s	s
Computer controlled urethane adhesive lamination process	s	s	s	s
2 lb. density polystyrene block foam insulation, 34% higher "R" value than fiberglass blanket	s	s	s	s
45 degree mitered and MIG welded frame corners	s	s	s	s
Large living area slide-out	s	s	s	s
Bedroom wardrobe slide-out	s	s	n	n
Dual bedroom slide-out	n	n	s	s
Slide-out awnings	s	s	s	s
A&E Power Pro® fabric power awning w/wind sensor	o	o	o	o
Lexan® front rock guard	o	o	o	o
3M® film front rock guard	o	o	o	o
Solarcool® mirror-tinted thermal pane windows	s	s	s	s
Kwikkee® single tier entrance step	s	s	s	s
HWH® self-synchronizing hydraulic main slide-out	s	s	s	s
Sealed/enclosed ceiling A/C duct w/interior Amoco® condensation barrier	s	s	s	s
PTL® lighted entry door w/screen	s	s	s	s
Insulated aluminum bay doors	s	s	s	s
Lighted & carpeted storage bays	s	s	s	s
Sanitation Station including: hot/cold outside sprayer/shower, paper towel holder, black tank flush system, light and soap dispenser	s	s	s	s
Premium Exterior/Interior Decor Choices:	s	s	s	s
Arctic Blue/Mood Indigo (blue)				
Meadow Green/Willow Bay (sage green)				
Summer Bronze/Brandywine (spice)				
Shadow Ebony/Black Tie (black & khaki)				
Autumn Tan/Woodlands (earthtones)				

Entertainment Features

34' 36' 38' 40'

27" Toshiba® Flat Screen TV in living area	s	s	s	s
37" Panasonic® Plasma TV in living area	o	o	o	o
VCR 4-head Hi-Fi stereo	s	s	s	s
Cable TV & phone hook up	s	s	s	s
Pioneer® AM/FM CD Player, XM Satellite Radio compatible and pre-wired w/mounted antenna	s	s	s	s
DVD Home Theatre Sound System	s	s	s	s
Winegard® TV antenna w/signal amplifier	s	s	s	s
Winegard® TV/Video Input Selection Unit	s	s	s	s
Winegard® satellite dish	o	o	o	o
Complete pre-wiring for King Dome® Satellite System	s	s	s	s
King Dome® electronic self-locating satellite dish	o	o	o	o
RCA® Satellite Receiver	s	s	s	s
High quality shielded digital RG-6 coax cable	s	s	s	s
19" TV in bedroom	s	s	s	s
Halogen reading lights w/dimmer switches	s	s	s	s
110-volt bedroom reading lights w/dimmer switch	s	s	s	s
Bose® Wave Stereo in bedroom	o	o	n	n

Bath Features

34' 36' 38' 40'

Residential shower & bathroom fixtures	s	s	s	s
Large garden shower	s	s	s	s
Tub/shower combination	o	o	o	o
Cedar lined wardrobe closet	s	s	n	n
Insulated skylight	s	s	s	s
Private water closet w/Thetford® porcelain toilet	s	s	s	s
Karadon® solid surface polished vanity countertop	s	s	s	s
Suburban® 10 gallon DSI/110-volt water heater	s	s	s	s
Power roof vent w/remote switch (water closet)	s	s	s	s

Bath Features (continued)	34'	36'	38'	40'
Fan-tastic® Vent w/remote switch in bath hallway	s	s	s	s
Residential medicine cabinet w/high intensity light bar	s	s	s	s
WilsonArt® laminate wood floor	s	s	s	s
Folding shower seat	o	o	o	o
Majestic® Washer/Dryer combo	o	o	o	o
Kenmore® Washer/Dryer stacked	n	n	o	o
Remote 12-volt water pump start switch	s	s	s	s

Interior Comforts	34'	36'	38'	40'
Maple hardwood cabinetry w/choice of Natural or Tuscan stain	s	s	s	s
Solid cherry cabinetry choices: Vintage Cherry, Natural Cherry or Heritage Cherry	o	o	o	o
Residential grade cabinet hardware	s	s	s	s
Microlene® water filtration system	s	s	s	s
Shur-Flo® high volume water pump w/in-line filter	s	s	s	s
Residential retractable galley faucet w/sprayer	s	s	s	s
Hardwood valance & blind at galley window	s	s	s	s
110-volt fluorescent galley lighting	s	s	s	s
Karadon® solid surface countertops, sink filler & backsplash polished to a high lustre	s	s	s	s
Karadon® solid surface dinette table w/single leg (no charge)	o	o	o	o
Day/Night shades	s	s	s	s
Free standing hardwood dinette table w/2 chairs	s	s	s	s
Booth dinette	o	o♦	o	o♦
Folding dinette chairs (2)	o	o	o	o
Atwood® 3-burner cooktop	s	s	s	s
Atwood® 22" gas oven	o	o	o	o
Amana® 30" residential gas four-burner cooktop	n	n	n	o▼
Convection/microwave oven	s	s	s	s
Dometic® 10 cu.ft. refrigerator (stacked) w/pantry	s	s	s	s
Dometic® 14 cu.ft. refrigerator (side x side) w/o pantry	o	o	o	o
21.5 cu.ft. Amana® residential refrigerator w/mandatory auto-generator start system	n	n	o	o
Fan-Tastic® vent in galley w/remote switch	s	s	s	s
Two-door pantry w/shelves	s	s	s	s
Power range vent hood w/light	s	s	s	s
WilsonArt® laminate wood flooring in galley	s	s	s	s
Residential wrap-around front privacy curtain	s	s	s	s
Fabrica® residential grade carpet w/padding	s	s	s	s
Dometic® two-zone dual 13,500 btu ducted A/C	s	s	s	s
Dometic® dual 15,000 btu ducted A/C w/integrated heat pumps	o	o	o	o
Porcelain high-gloss tile throughout galley, dinette & bath	o	o	o	o
Solid pocket door between bedroom & bath	s	s	s	s
Large nickel plated stainless steel double galley sink	s	s	s	s
Hydro-Flame® 42,000 btu ducted LP furnace	s	s	s	s
Central vacuum cleaner w/attachments	s	s	s	s
Computer desk (curbside - N/A w/EZ bed)	n	o♦	n	o♦
Flexsteel® Premium upholstered recliner (curbside)	s	s	s	s
Flexsteel® Premium ultra-leather recliner (curbside - upgrade)	o	o	o	o
Flexsteel® Premium euro chair w/ottoman	o	o	o	o
Flexsteel® Premium upholstered EZ bed (roadside)	s	s	s	s
Flexsteel® Premium ultra-leather EZ bed (roadside)	o	o	o	o
Flexsteel® Premium upholstered EZ bed (curbside)	n	o♦	n	o♦
Flexsteel® Premium ultra-leather EZ bed (curbside)	n	o♦	n	o♦

s = standard | o = option | n = not available

♦ = not available in mid-door models

▼ = not available in front-door models

★ = not an option w/Residential Refrigerator option

† = required w/Residential Refrigerator option

Interior Comforts (continued)	34'	36'	38'	40'
Bodyrest® 60" x 80" full queen size walk around bed	s	s	s	s▼
Bodyrest® 76" x 80" full king size walk around bed	n	n	n	s★
U-Line® icemaker in basement	o	o	o★	o★
Padded Vinyl Ceiling	o	o	o	o
Premium Exterior/Interior Decor Choices: Arctic Blue/Mood Indigo (blue) Meadow Green/Willow Bay (sage green) Summer Bronze/Brandywine (spice) Shadow Ebony/Black Tie (black & khaki) Autumn Tan/Woodlands (earthtones)	s	s	s	s

Electrical Systems	34'	36'	38'	40'
7.5 kw Onan® quiet diesel generator	s	s	s	s
Interstate® batteries	s	s	s	s
2000-watt Xantrex® inverter w/100 amp charger: (2) 660 CCA 12-volt batteries (chassis), (6) 6-volt batteries w/732 total amp. hours (house)	s	s	s	s
Siemens® solar panels - (2) 50-watt/3 amp	o	o	o	o
Solar panel - 10-watt trickle charge	o	o	o	o
12-volt remote shut-off switch	s	s	s	s
50 amp service w/detachable power cord - 35 ft. cable	s	s	s	s
High intensity patio awning/security light	s	s	s	s
6-pin tow plug	s	s	s	s
Basement cable TV & telephone	s	s	s	s
Basement dual 110-volt GFI outlet	s	s	s	s
Glendinning® power cable reel - 35 ft. cable	o	o	o	o
Automatic generator start system	n	n	o†	o†

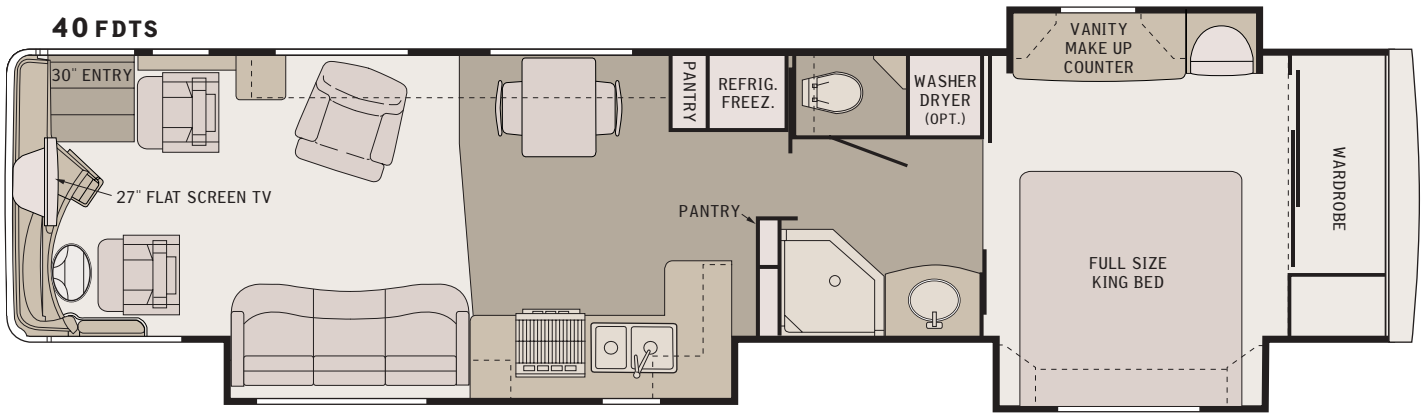
Driving Comforts	34'	36'	38'	40'
Ergonomically designed dash w/oversized gauges	s	s	s	s
Dual air horns	s	s	s	s
Electronic cruise control & throttle	s	s	s	s
Multi-plex dash instrumentation	s	s	s	s
Integrated drive-train monitor systems	s	s	s	s
Battery boost switch	s	s	s	s
Rear hidden camera & dash-mounted monitor	s	s	s	s
Bus style urethane set windshields	s	s	s	s
Carefree® Powervisor elec. sun visors	s	s	s	s
Flexsteel® ultra-leather driver/passenger seats	s	s	s	s
Flexsteel® ultra-leather driver seat and passenger Buddy Seat w/integrated 3-point seat belts	o	o	o	o
6-way power driver seat	s	s	s	s
Ultra-leather Buddy Seat w/Power Footrest (2-point seat belt)	o	o	o	o
Electrically operated recessed stepwell cover	s	s♦	s	s♦
Dual map lights	s	s	s	s
Dual auxiliary circulation fans	s	s	s	s
Hella® automotive style sealed beam halogen headlamps	s	s	s	s
Forward mounted chrome mirrors, heated & remote controlled	s	s	s	s
Smart Wheel® w/momentary running light and headlamp buttons, cruise control & windshield wiper delay controls	s	s	s	s
Driving lights	s	s	s	s
Two remote generator start switches	s	s	s	s
Auxiliary 12-volt dash receptacle	s	s	s	s
CB antenna & coax pre-wire	s	s	s	s
Dash A/C & heating	s	s	s	s
Cabinet storage above driver and passenger	s	s	s	s

2004 Alpine Coach
Limited

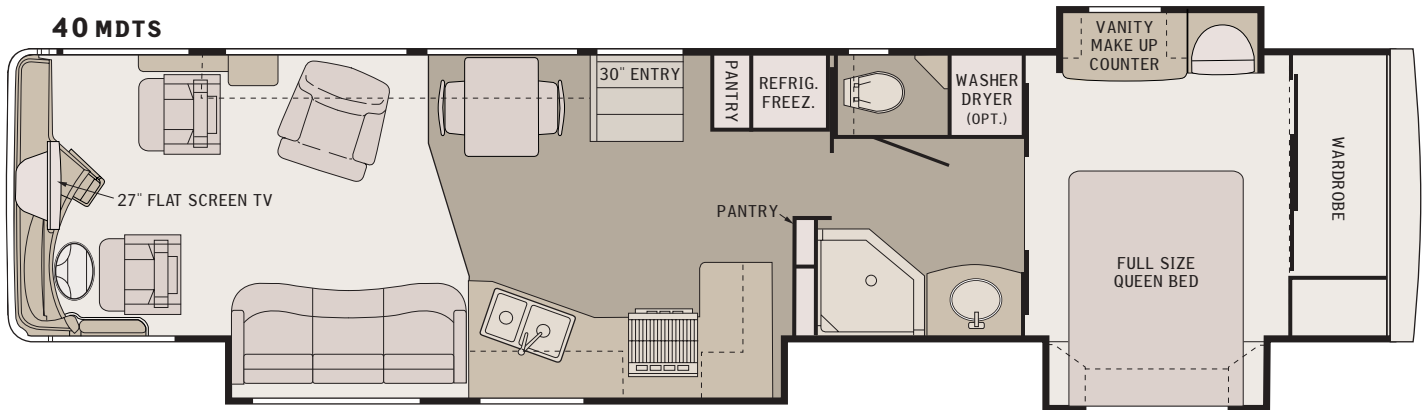


2004 FLOOR PLANS

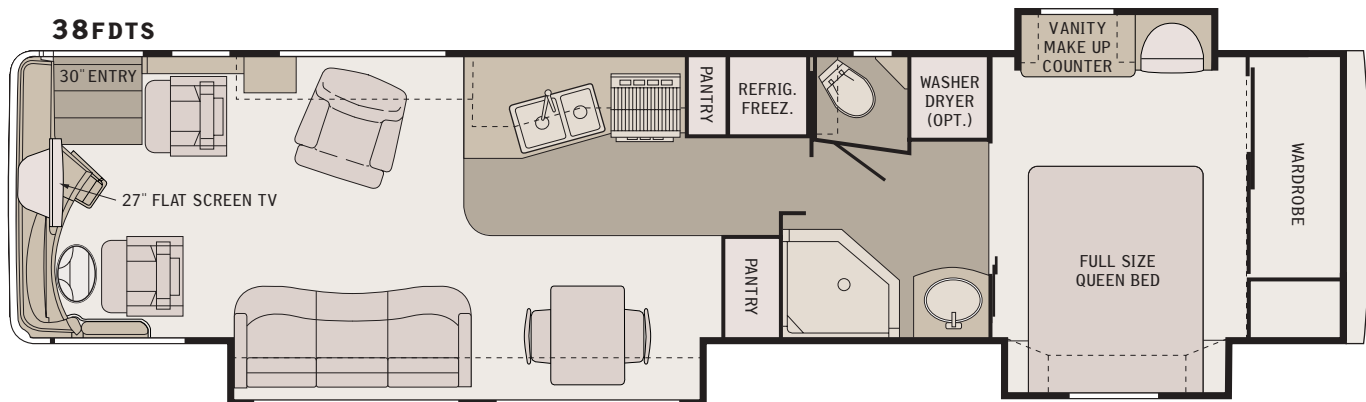
40 FDTs



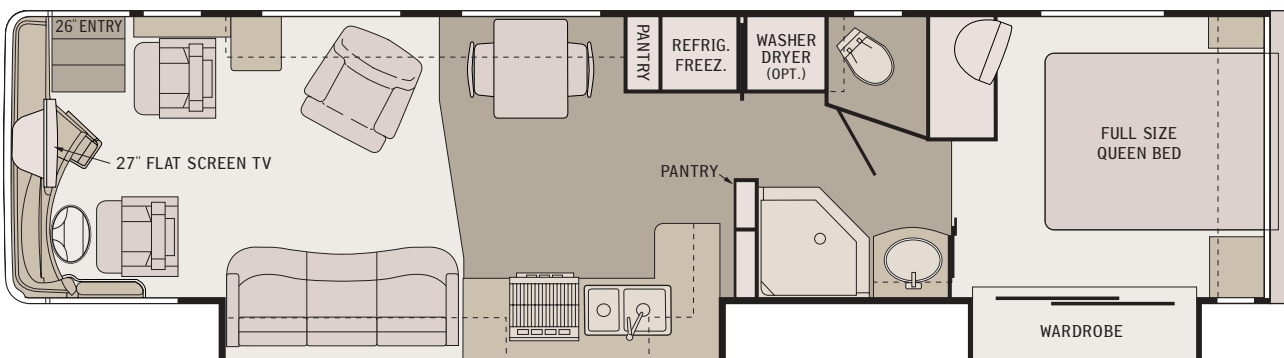
40 MDTs

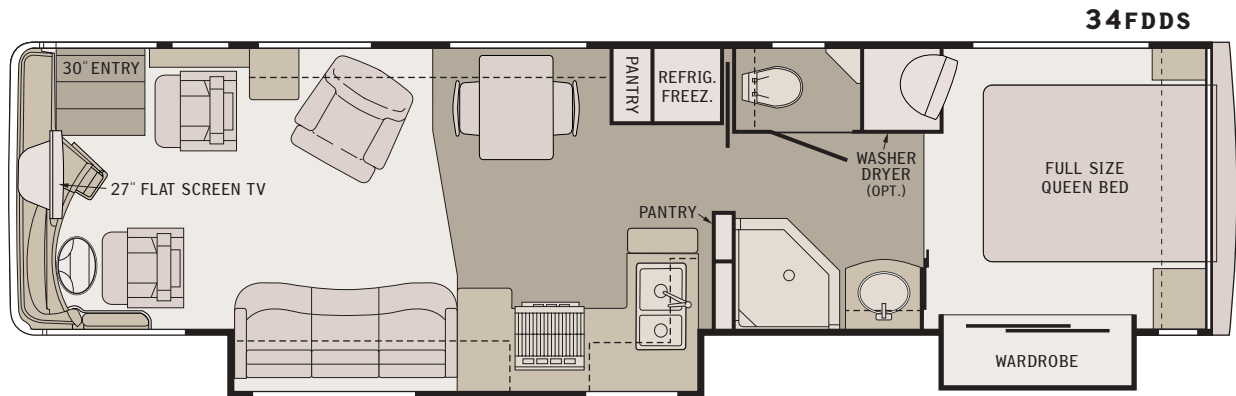
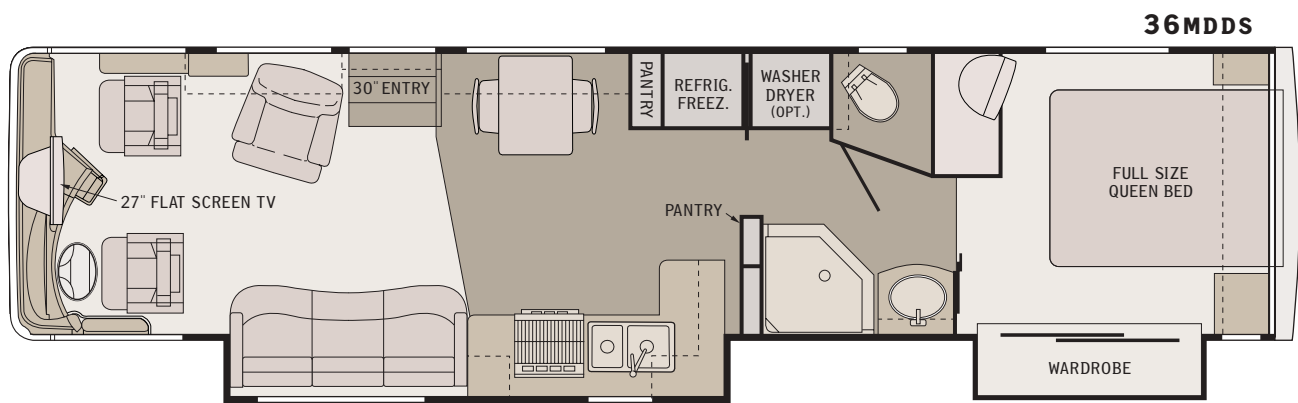


38 FDTs



36 FDDs





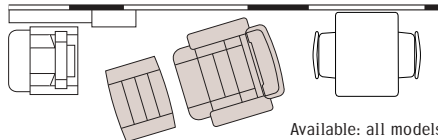
2004 FLOOR PLAN OPTIONS

CURBSIDE EZ BED



Available: 36FDDS, 40FDTs

EURO CHAIR WITH OTTOMAN



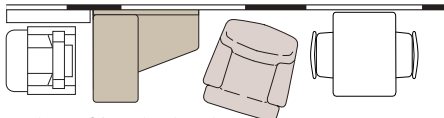
Available: all models

BOOTH DINETTE



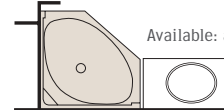
Available:
34FDDS, 36FDDS,
38FDTs, 40FDTs

COMPUTER DESK WITH RECLINER



Available: 36FDDS, 40FDTs

GARDEN TUB/SHOWER



Available: all models

2004 WEIGHTS AND MEASURES

	34FDDS	36FDDS	36MDDS	38FDTs	40FDTs	40MDTs
Interior height	6'7"	6'7"	6'7"	6'7"	6'7"	6'7"
Exterior height	11'9"	11'9"	11'9"	11'9"	11'9"	11'9"
Exterior width	102"	102"	102"	102"	102"	102"
Wheelbase	217"	252"	252"	260"	278"	278"
Length overall	34'11"	37'	37'	38'6"	40'	40'
Gross Axle Weight Rating - GAWR front	13,000	13,000	13,000	13,000	13,000	13,000
Gross Axle Weight Rating - GAWR rear	20,000	20,000	20,000	20,000	20,000	20,000
Unloaded Vehicle Weight with fuel - UVW lbs.+	24,122	24,432	24,177	25,556	26,041	25,853
Cargo Carrying Capacity - CCC lbs	7,160	6,850	7,105	5,726	5,241	5,429
Gross Vehicle Weight Rating - GVWR lbs.	33,000	33,000	33,000	33,000	33,000	33,000
Fuel tank - gallons	100	100	100	100	100	100
Gross Combined Weight Rating - GCWR lbs.*	43,000	43,000	43,000	43,000	43,000	43,000
LPG tank - gallons	42	42	42	42	42	42
Fresh water - gallons	100	100	100	100	100	100
Combined waste tank capacity - gallons	148	178	178	178	178	178

+ UVW is based on standard models and does not include options, cargo, fresh water, LP gas or occupants.

* The maximum allowable combined weight of the coach with the attached towed vehicle. Towing and braking capacities may differ. GCWR assumes both vehicles have functioning brakes.

*2004 Alpine Coach
Limited*



INSIDE OR OUT, IT'S THE PLACE TO BE!

MODEL 34 FDDS • Willow Bay Interior with Tuscan Maple Cabinetry, Folding Dinette Chairs, Solid Surface Dinette Table, Flexsteel® Ultra-Leather Recliner, Porcelain Tile and Padded Vinyl Ceiling options.



2004 DECOR AND INTERIOR WOOD CHOICES



Black Tie



Brandywine



Willow Bay



Mood Indigo



Woodlands



Natural Cherry



Heritage Cherry



Vintage Cherry



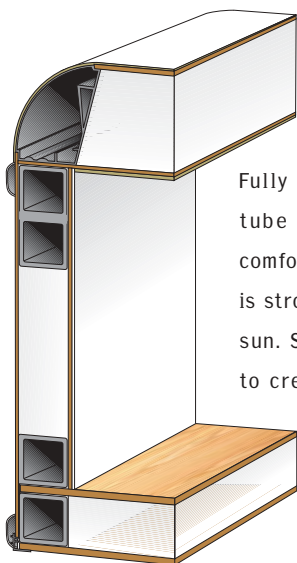
Natural Maple



Tuscan Maple

Western Recreational Vehicles, Inc. is proud to continue the tradition of building America's Premium Performance Motor Coach – the 2004 Alpine Coach Limited.

MODEL 40 MDTs • Arctic Blue Premium Exterior with Cummins® 8.9 ISL Electronic 400hp engine option.



Quality Construction

Fully laminated vacuum bonded 6005 T5 aluminum tube construction with block foam insulation for comfort in any climate. The one-piece fiberglass roof is strong, durable and 5.25" thick to insulate from the sun. Sidewalls are 2" thick while the floor is 2.25" to create a quiet ride.

Extra Care and Attention to Detail.



2004 Alpine Coach Limited

ENJOY THE RIDE!



MODEL 40 MDTs • Meadow Green Premium Exterior with A&E Power Pro® Awning with Wind Sensor and Cummins® 8.9 ISL Electronic 400hp Engine options.

MAKE PLANS TO TAKE THE *Alpine Coach* TOUR

We invite you to visit our state-of-the-art manufacturing facility located in beautiful Yakima, Washington. During your extensive tour, you will see Alpine Coaches being assembled with tremendous skill and pride. You'll also see our stringent Quality Assurance Program at work. Tours are available Tuesday and Thursday at 10:00 am.



Your Authorized Dealer

Manufactured by Western Recreational Vehicles, Inc.
PO Box 9547, 3401 W. Washington Ave. • Yakima, WA 98909
Toll Free Product Information - **(800) 777-4133** • www.wrv.com

Every effort has been made to use accurate photographs, product descriptions and specifications at the time of printing. However, because of continuous and progressive product improvement, specifications and descriptions, including weights and measures, are subject to change without notice or obligation.

*2004 Alpine Coach
Limited*