

ASSEMBLY PART NUMBERS AND DESCRIPTION

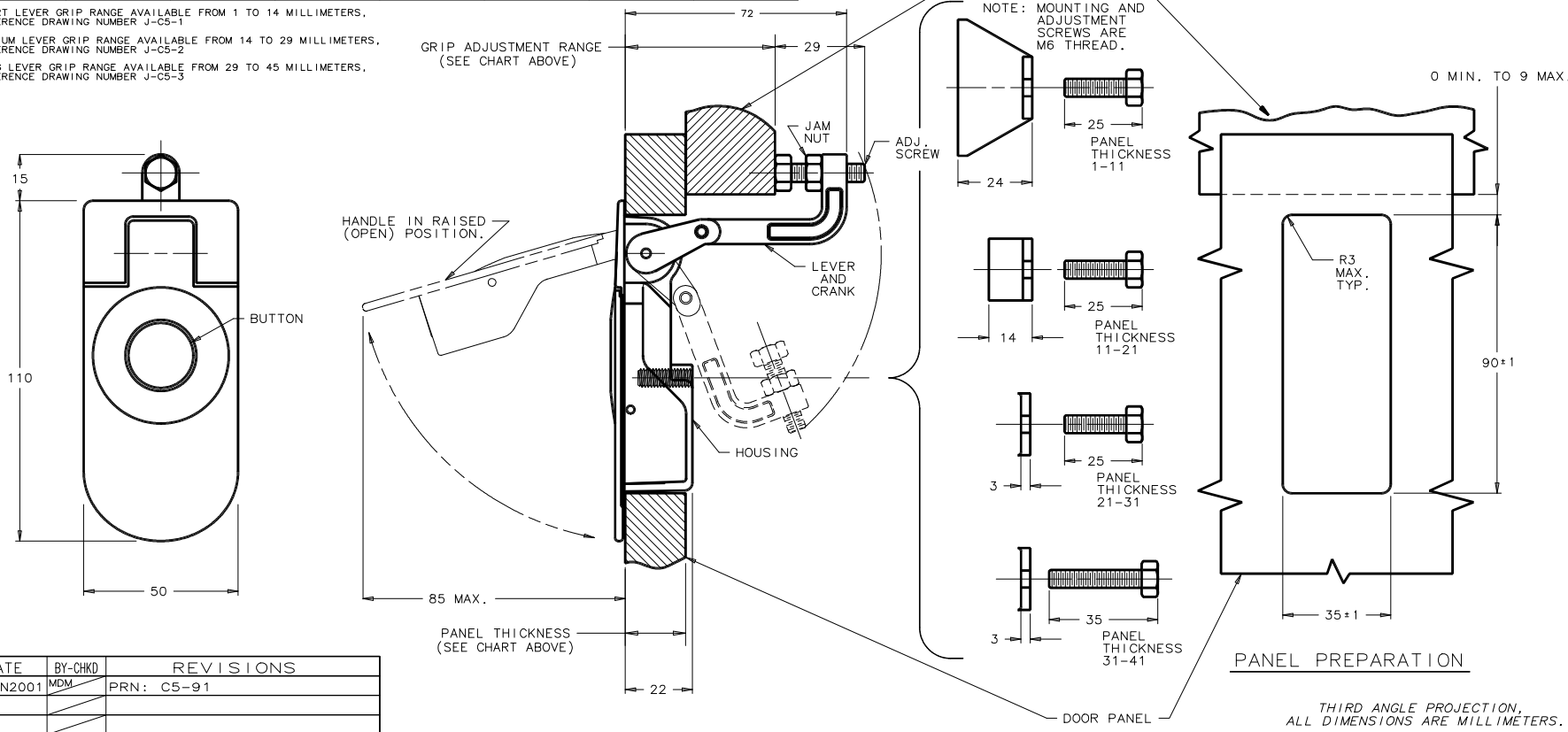
PANEL THICKNESS (mm)	EXTRA LONG* LEVER GRIP RANGE	BLACK ASSEMBLY WITH PLATED STEEL HARDWARE	BLACK ASSEMBLY WITH STAINLESS STEEL HARDWARE	SILVER ASSEMBLY WITH PLATED STEEL HARDWARE	SILVER ASSEMBLY WITH STAINLESS STEEL HARDWARE	CARDINAL WHITE ASSEMBLY WITH PLATED STEEL HARDWARE	CARDINAL WHITE ASSEMBLY WITH STAINLESS STEEL HARDWARE
1-11	45-57	C5-11-45	C5-11-46	C5-11-43	C5-11-44	C5-11-41	C5-11-42
11-21		C5-12-45	C5-12-46	C5-12-43	C5-12-44	C5-12-41	C5-12-42
21-31		C5-13-45	C5-13-46	C5-13-43	C5-13-44	C5-13-41	C5-13-42
31-41		C5-14-45	C5-14-46	C5-14-43	C5-14-44	C5-14-41	C5-14-42

\*SHORT LEVER GRIP RANGE AVAILABLE FROM 1 TO 14 MILLIMETERS, REFERENCE DRAWING NUMBER J-C5-1  
 MEDIUM LEVER GRIP RANGE AVAILABLE FROM 14 TO 29 MILLIMETERS, REFERENCE DRAWING NUMBER J-C5-2  
 LONG LEVER GRIP RANGE AVAILABLE FROM 29 TO 45 MILLIMETERS, REFERENCE DRAWING NUMBER J-C5-3

MATERIAL AND FINISH

LATCH ASSEMBLY CONSISTS OF:  
 HOUSING, HANDLE AND BUTTON:  
 DIE CAST ZINC, SEE TABLE FOR FINISH.  
 LEVER AND CRANK: DIE CAST ZINC, COATED WITH CLEAR CHEMICAL PROTECTIVE FILM.  
 BLACK TORSION SPRING: 303 STAINLESS STEEL, PASSIVATED.  
 ROLL PINS: 420 STAINLESS STEEL, PASSIVATED.  
 O-RINGS: BUNA-N RUBBER, BLACK.

HARDWARE CONSISTS OF:  
 MOUNTING BRACKET  
 MOUNTING SCREW  
 ADJUSTING SCREW  
 JAM NUT  
 1010 STEEL, ZINC PLATED WITH SEALED CHROMATE.  
 OR  
 300 SERIES STAINLESS STEEL, PASSIVATED.



REV.	DATE	BY-CHKD	REVISIONS
D	03JAN2001	MDM	PRN: C5-91

THIRD ANGLE PROJECTION, ALL DIMENSIONS ARE MILLIMETERS.

PROPRIETARY ITEM - EXCEPT FOR USES EXPRESSLY GRANTED IN WRITING INFORMATION DISCLOSED HEREON IS CONFIDENTIAL AND ALL RIGHTS PATENT AND OTHERWISE ARE RESERVED BY SOUTHCO, INC.

FORM 27/88