

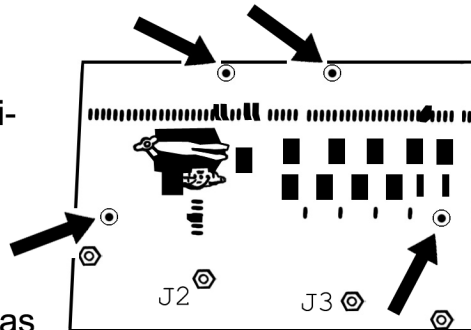
Installation Instructions for Isolator Dual Delay 12-Volt Relay



READ THIS FIRST!

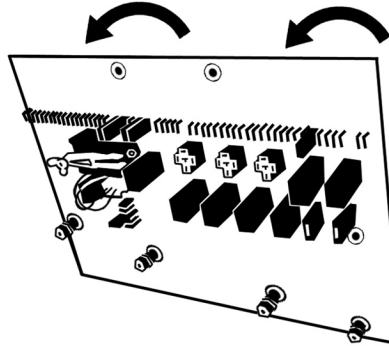
Disconnect House Batteries AND Engine Batteries BEFORE attempting this installation procedure. Ensure keys are removed from ignition. If applicable, disconnect shore power. Failure to do so may result in bodily injury, equipment damage, or both.

Locate the House Power Distribution Panel and remove mounting bolts as indicated.

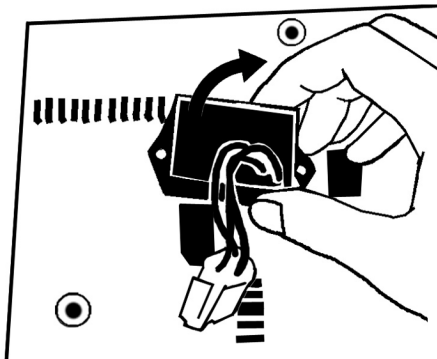


Set mounting hardware aside as it will be needed during reinstallation.

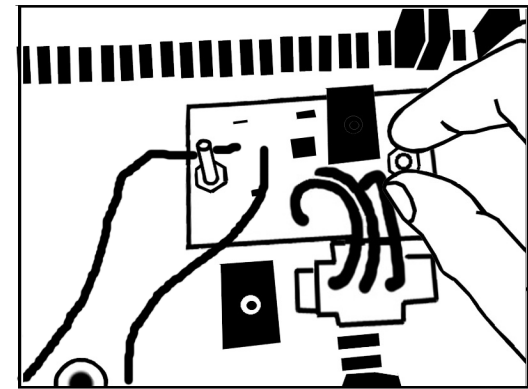
Being careful not to strain wired connectors, gently pull panel forward as shown.



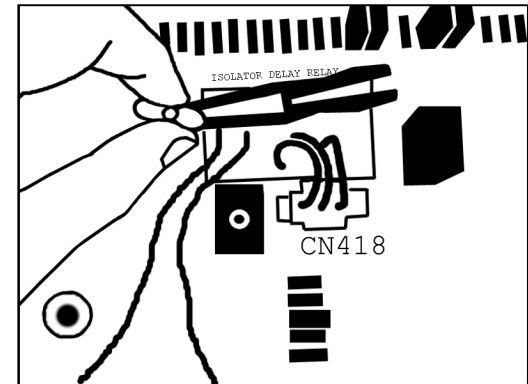
Remove the Isolator Delay Relay, fuse extractor, and associated retaining bolts. In some installations it may be necessary to stabilize retaining bolts from rear while loosening hardware.



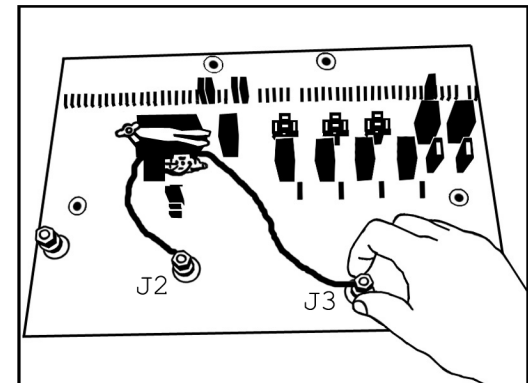
Place new Isolator Dual Delay Relay onto mounting studs. Firmly tighten relay into position using lock washers and retaining nuts.



Secure fuse extractor to longer mounting stud. Insert connector into jack CN418.



Connect one BLUE wire to 12-Volt House Non-Switch bolt (J2) and remaining BLUE wire to 12-Volt Battery Chassis bolt (J3)



Either BLUE wire can go to either J2 or J3.

Gently push panel back into position and reinstall four mounting bolts.

