

| RELEASE NUMBER | REV LTR | ZONE | REVISION DESCRIPTION          | BY  | DATE     | APPD |
|----------------|---------|------|-------------------------------|-----|----------|------|
| P21058-01      | B       | --   | ADDED TOW WIRING              | ARZ | 12/12/02 | MWP  |
| P25343-38      | C       | --   | WAS CADAM DRWG IS CATIA DRWG. | JRJ | 08/16/04 | JMD  |

| POS | CODE      | BACK-UP ALARM |
|-----|-----------|---------------|
| A   | 1208 DKRL |               |
| B   | 0N02 BK   |               |

| POS | CODE    | FUEL/WATER SEPARATOR WATER IN FUEL HEATER |
|-----|---------|---|
| A   | 196 DKG |   |
| B   | 0N02 BK |   |

| POS | CODE   | BODY BUILDER INTERFACE REAR LAMPS CONNECTOR |
|-----|--------|---|
| A   | 60 Y   |   |
| B   | 61 DKG |   |

| POS | CODE      | BODY BUILDER INTERFACE REAR LAMPS CONNECTOR |
|-----|-----------|---|
| A   | 0N02 BK   |   |
| B   | 38L Y     |   |
| C   | 46 BR     |   |
| D   | 1208 DKRL |   |
| E   | 366 R     |   |
| F   | 23 BR     |   |
| G   | 38R DKG   |   |

| POS | CODE        | CHASSIS/ENGINE HARNESS INTERFACE |
|-----|-------------|----------------------------------|
| A2  | N19-C993 GY |                                  |
| A4  | C409 GY     |                                  |
| A6  | N06 GY      |                                  |
| A8  | N03 GY      |                                  |
| B1  | N18-C985 GY |                                  |
| B3  | N11-C986 GY |                                  |
| B7  | 3390+ DKG   |                                  |
| B9  | 3390- DKG   |                                  |
| C2  | E115 V      |                                  |
| C4  | 376L3 O     |                                  |
| C6  | N16-C981 R  |                                  |
| C8  | N02-C975 GY |                                  |
| D1  | PLUG        |                                  |
| D3  | 0N09 BK     |                                  |
| D5  | N12-C978 GY |                                  |
| D7  | 376T1 O     |                                  |
| D9  | N02-C979 GY |                                  |
| E1  | PLUG        |                                  |
| E9  | PLUG        |                                  |
| F1  | PLUG        |                                  |
| F3  | PLUG        |                                  |
| G1  | N03 T       |                                  |
| G3  | 125A R      |                                  |
| G5  | N13-C992 BK |                                  |
| G7  | N21-C991 R  |                                  |
| G9  | N21-C984 GY |                                  |
| H2  | N14 GY      |                                  |
| H4  | N03 GY      |                                  |
| H6  | 1587-B DKG  |                                  |
| H8  | 1587-B O    |                                  |
| J1  | 15+ R       |                                  |
| J3  | PLUG        |                                  |
| J5  | 339A DKG    |                                  |
| J9  | 97C LTBL    |                                  |
| K2  | 0N06 BK     |                                  |
| K4  | PLUG        |                                  |
| K6  | 71 PK       |                                  |
| K8  | PLUG        |                                  |

| POS | CODE        | CHASSIS/ENGINE HARNESS INTERFACE |
|-----|-------------|----------------------------------|
| A2  | N19-C993 GY |                                  |
| A4  | C409 GY     |                                  |
| A6  | N06 GY      |                                  |
| A8  | N03 GY      |                                  |
| B1  | N18-C985 GY |                                  |
| B3  | N11-C986 GY |                                  |
| B7  | 3390+ DKG   |                                  |
| B9  | 3390- DKG   |                                  |
| C2  | E115 V      |                                  |
| C4  | 376L3 O     |                                  |
| C6  | N16-C981 R  |                                  |
| C8  | N02-C975 GY |                                  |
| D1  | PLUG        |                                  |
| D3  | 0N09 BK     |                                  |
| D5  | N12-C978 GY |                                  |
| D7  | 376T1 O     |                                  |
| D9  | N02-C979 GY |                                  |
| E1  | PLUG        |                                  |
| E9  | PLUG        |                                  |
| F1  | PLUG        |                                  |
| F3  | PLUG        |                                  |
| G1  | N03 T       |                                  |
| G3  | 125A R      |                                  |
| G5  | N13-C992 BK |                                  |
| G7  | N21-C991 R  |                                  |
| G9  | N21-C984 GY |                                  |
| H2  | N14 GY      |                                  |
| H4  | N03 GY      |                                  |
| H6  | 1587-B DKG  |                                  |
| H8  | 1587-B O    |                                  |
| J1  | 15+ R       |                                  |
| J3  | PLUG        |                                  |
| J5  | 339A DKG    |                                  |
| J9  | 97C LTBL    |                                  |
| K2  | 0N06 BK     |                                  |
| K4  | PLUG        |                                  |
| K6  | 71 PK       |                                  |
| K8  | PLUG        |                                  |

| POS | CODE        | CHASSIS/ENGINE HARNESS INTERFACE |
|-----|-------------|----------------------------------|
| A2  | N19-C993 GY |                                  |
| A4  | C409 GY     |                                  |
| A6  | N06 GY      |                                  |
| A8  | N03 GY      |                                  |
| B1  | N18-C985 GY |                                  |
| B3  | N11-C986 GY |                                  |
| B7  | 3390+ DKG   |                                  |
| B9  | 3390- DKG   |                                  |
| C2  | E115 V      |                                  |
| C4  | 376L3 O     |                                  |
| C6  | N16-C981 R  |                                  |
| C8  | N02-C975 GY |                                  |
| D1  | PLUG        |                                  |
| D3  | 0N09 BK     |                                  |
| D5  | N12-C978 GY |                                  |
| D7  | 376T1 O     |                                  |
| D9  | N02-C979 GY |                                  |
| E1  | PLUG        |                                  |
| E9  | PLUG        |                                  |
| F1  | PLUG        |                                  |
| F3  | PLUG        |                                  |
| G1  | N03 T       |                                  |
| G3  | 125A R      |                                  |
| G5  | N13-C992 BK |                                  |
| G7  | N21-C991 R  |                                  |
| G9  | N21-C984 GY |                                  |
| H2  | N14 GY      |                                  |
| H4  | N03 GY      |                                  |
| H6  | 1587-B DKG  |                                  |
| H8  | 1587-B O    |                                  |
| J1  | 15+ R       |                                  |
| J3  | PLUG        |                                  |
| J5  | 339A DKG    |                                  |
| J9  | 97C LTBL    |                                  |
| K2  | 0N06 BK     |                                  |
| K4  | PLUG        |                                  |
| K6  | 71 PK       |                                  |
| K8  | PLUG        |                                  |

| POS | CODE        | CHASSIS/ENGINE HARNESS INTERFACE |
|-----|-------------|----------------------------------|
| A2  | N19-C993 GY |                                  |
| A4  | C409 GY     |                                  |
| A6  | N06 GY      |                                  |
| A8  | N03 GY      |                                  |
| B1  | N18-C985 GY |                                  |
| B3  | N11-C986 GY |                                  |
| B7  | 3390+ DKG   |                                  |
| B9  | 3390- DKG   |                                  |
| C2  | E115 V      |                                  |
| C4  | 376L3 O     |                                  |
| C6  | N16-C981 R  |                                  |
| C8  | N02-C975 GY |                                  |
| D1  | PLUG        |                                  |
| D3  | 0N09 BK     |                                  |
| D5  | N12-C978 GY |                                  |
| D7  | 376T1 O     |                                  |
| D9  | N02-C979 GY |                                  |
| E1  | PLUG        |                                  |
| E9  | PLUG        |                                  |
| F1  | PLUG        |                                  |
| F3  | PLUG        |                                  |
| G1  | N03 T       |                                  |
| G3  | 125A R      |                                  |
| G5  | N13-C992 BK |                                  |
| G7  | N21-C991 R  |                                  |
| G9  | N21-C984 GY |                                  |
| H2  | N14 GY      |                                  |
| H4  | N03 GY      |                                  |
| H6  | 1587-B DKG  |                                  |
| H8  | 1587-B O    |                                  |
| J1  | 15+ R       |                                  |
| J3  | PLUG        |                                  |
| J5  | 339A DKG    |                                  |
| J9  | 97C LTBL    |                                  |
| K2  | 0N06 BK     |                                  |
| K4  | PLUG        |                                  |
| K6  | 71 PK       |                                  |
| K8  | PLUG        |                                  |

| POS | CODE        | CHASSIS/ENGINE HARNESS INTERFACE |
|-----|-------------|----------------------------------|
| A2  | N19-C993 GY |                                  |
| A4  | C409 GY     |                                  |
| A6  | N06 GY      |                                  |
| A8  | N03 GY      |                                  |
| B1  | N18-C985 GY |                                  |
| B3  | N11-C986 GY |                                  |
| B7  | 3390+ DKG   |                                  |
| B9  | 3390- DKG   |                                  |
| C2  | E115 V      |                                  |
| C4  | 376L3 O     |                                  |
| C6  | N16-C981 R  |                                  |
| C8  | N02-C975 GY |                                  |
| D1  | PLUG        |                                  |
| D3  | 0N09 BK     |                                  |
| D5  | N12-C978 GY |                                  |
| D7  | 376T1 O     |                                  |
| D9  | N02-C979 GY |                                  |
| E1  | PLUG        |                                  |
| E9  | PLUG        |                                  |
| F1  | PLUG        |                                  |
| F3  | PLUG        |                                  |
| G1  | N03 T       |                                  |
| G3  | 125A R      |                                  |
| G5  | N13-C992 BK |                                  |
| G7  | N21-C991 R  |                                  |
| G9  | N21-C984 GY |                                  |
| H2  | N14 GY      |                                  |
| H4  | N03 GY      |                                  |
| H6  | 1587-B DKG  |                                  |
| H8  | 1587-B O    |                                  |
| J1  | 15+ R       |                                  |
| J3  | PLUG        |                                  |
| J5  | 339A DKG    |                                  |
| J9  | 97C LTBL    |                                  |
| K2  | 0N06 BK     |                                  |
| K4  | PLUG        |                                  |
| K6  | 71 PK       |                                  |
| K8  | PLUG        |                                  |

| POS | CODE        | CHASSIS/ENGINE HARNESS INTERFACE |
|-----|-------------|----------------------------------|
| A2  | N19-C993 GY |                                  |
| A4  | C409 GY     |                                  |
| A6  | N06 GY      |                                  |
| A8  | N03 GY      |                                  |
| B1  | N18-C985 GY |                                  |
| B3  | N11-C986 GY |                                  |
| B7  | 3390+ DKG   |                                  |
| B9  | 3390- DKG   |                                  |
| C2  | E115 V      |                                  |
| C4  | 376L3 O     |                                  |
| C6  | N16-C981 R  |                                  |
| C8  | N02-C975 GY |                                  |
| D1  | PLUG        |                                  |
| D3  | 0N09 BK     |                                  |
| D5  | N12-C978 GY |                                  |
| D7  | 376T1 O     |                                  |
| D9  | N02-C979 GY |                                  |
| E1  | PLUG        |                                  |
| E9  | PLUG        |                                  |
| F1  | PLUG        |                                  |
| F3  | PLUG        |                                  |
| G1  | N03 T       |                                  |
| G3  | 125A R      |                                  |
| G5  | N13-C992 BK |                                  |
| G7  | N21-C991 R  |                                  |
| G9  | N21-C984 GY |                                  |
| H2  | N14 GY      |                                  |
| H4  | N03 GY      |                                  |
| H6  | 1587-B DKG  |                                  |
| H8  | 1587-B O    |                                  |
| J1  | 15+ R       |                                  |
| J3  | PLUG        |                                  |
| J5  | 339A DKG    |                                  |
| J9  | 97C LTBL    |                                  |
| K2  | 0N06 BK     |                                  |
| K4  | PLUG        |                                  |
| K6  | 71 PK       |                                  |
| K8  | PLUG        |                                  |

| POS | CODE        | CHASSIS/ENGINE HARNESS INTERFACE |
|-----|-------------|----------------------------------|
| A2  | N19-C993 GY |                                  |
| A4  | C409 GY     |                                  |
| A6  | N06 GY      |                                  |
| A8  | N03 GY      |                                  |
| B1  | N18-C985 GY |                                  |
| B3  | N11-C986 GY |                                  |
| B7  | 3390+ DKG   |                                  |
| B9  | 3390- DKG   |                                  |
| C2  | E115 V      |                                  |
| C4  | 376L3 O     |                                  |
| C6  | N16-C981 R  |                                  |
| C8  | N02-C975 GY |                                  |
| D1  | PLUG        |                                  |
| D3  | 0N09 BK     |                                  |
| D5  | N12-C978 GY |                                  |
| D7  | 376T1 O     |                                  |
| D9  | N02-C979 GY |                                  |
| E1  | PLUG        |                                  |
| E9  | PLUG        |                                  |
| F1  | PLUG        |                                  |
| F3  | PLUG        |                                  |
| G1  | N03 T       |                                  |
| G3  | 125A R      |                                  |
| G5  | N13-C992 BK |                                  |
| G7  | N21-C991 R  |                                  |
| G9  | N21-C984 GY |                                  |
| H2  | N14 GY      |                                  |
| H4  | N03 GY      |                                  |
| H6  | 1587-B DKG  |                                  |
| H8  | 1587-B O    |                                  |
| J1  | 15+ R       |                                  |
| J3  | PLUG        |                                  |
| J5  | 339A DKG    |                                  |
| J9  | 97C LTBL    |                                  |
| K2  | 0N06 BK     |                                  |
| K4  | PLUG        |                                  |
| K6  | 71 PK       |                                  |
| K8  | PLUG        |                                  |

| POS | CODE        | CHASSIS/ENGINE HARNESS INTERFACE |
|-----|-------------|----------------------------------|
| A2  | N19-C993 GY |                                  |
| A4  | C409 GY     |                                  |
| A6  | N06 GY      |                                  |
| A8  | N03 GY      |                                  |
| B1  | N18-C985 GY |                                  |
| B3  | N11-C986 GY |                                  |
| B7  | 3390+ DKG   |                                  |
| B9  | 3390- DKG   |                                  |
| C2  | E115 V      |                                  |
| C4  | 376L3 O     |                                  |
| C6  | N16-C981 R  |                                  |
| C8  | N02-C975 GY |                                  |
| D1  | PLUG        |                                  |
| D3  | 0N09 BK     |                                  |
| D5  | N12-C978 GY |                                  |
| D7  | 376T1 O     |                                  |
| D9  | N02-C979 GY |                                  |
| E1  | PLUG        |                                  |
| E9  | PLUG        |                                  |
| F1  | PLUG        |                                  |
| F3  | PLUG        |                                  |
| G1  | N03 T       |                                  |
| G3  | 125A R      |                                  |
| G5  | N13-C992 BK |                                  |
| G7  | N21-C991 R  |                                  |
| G9  | N21-C984 GY |                                  |
| H2  | N14 GY      |                                  |
| H4  | N03 GY      |                                  |
| H6  | 1587-B DKG  |                                  |
| H8  | 1587-B O    |                                  |
| J1  | 15+ R       |                                  |
| J3  | PLUG        |                                  |
| J5  | 339A DKG    |                                  |
| J9  | 97C LTBL    |                                  |
| K2  | 0N06 BK     |                                  |
| K4  | PLUG        |                                  |
| K6  | 71 PK       |                                  |
| K8  | PLUG        |                                  |

| POS | CODE        | CHASSIS/ENGINE HARNESS INTERFACE |
|-----|-------------|----------------------------------|
| A2  | N19-C993 GY |                                  |
| A4  | C409 GY     |                                  |
| A6  | N06 GY      |                                  |
| A8  | N03 GY      |                                  |
| B1  | N18-C985 GY |                                  |
| B3  | N11-C986 GY |                                  |
| B7  | 3390+ DKG   |                                  |
| B9  | 3390- DKG   |                                  |
| C2  | E115 V      |                                  |
| C4  | 376L3 O     |                                  |
| C6  | N16-C981 R  |                                  |
| C8  | N02-C975 GY |                                  |
| D1  | PLUG        |                                  |
| D3  | 0N09 BK     |                                  |
| D5  | N12-C978 GY |                                  |
| D7  | 376T1 O     |                                  |
| D9  | N02-C979 GY |                                  |
| E1  | PLUG        |                                  |
| E9  | PLUG        |                                  |
| F1  | PLUG        |                                  |
| F3  | PLUG        |                                  |
| G1  | N03 T       |                                  |
| G3  | 125A R      |                                  |
| G5  | N13-C992 BK |                                  |
| G7  | N21-C991 R  |                                  |
| G9  | N21-C984 GY |                                  |
| H2  | N14 GY      |                                  |
| H4  | N03 GY      |                                  |
| H6  | 1587-B DKG  |                                  |
| H8  | 1587-B O    |                                  |
| J1  | 15+ R       |                                  |
| J3  | PLUG        |                                  |
| J5  | 339A DKG    |                                  |
| J9  | 97C LTBL    |                                  |
| K2  | 0N06 BK     |                                  |
| K4  | PLUG        |                                  |
| K6  | 71 PK       |                                  |
| K8  | PLUG        |                                  |

| POS | CODE        | CHASSIS/ENGINE HARNESS INTERFACE |
|-----|-------------|----------------------------------|
| A2  | N19-C993 GY |                                  |
| A4  | C409 GY     |                                  |
| A6  | N06 GY      |                                  |
| A8  | N03 GY      |                                  |
| B1  | N18-C985 GY |                                  |
| B3  | N11-C986 GY |                                  |
| B7  | 3390+ DKG   |                                  |
| B9  | 3390- DKG   |                                  |
| C2  | E115 V      |                                  |
| C4  | 376L3 O     |                                  |
| C6  | N16-C981 R  |                                  |
| C8  | N02-C975 GY |                                  |
| D1  | PLUG        |                                  |
| D3  | 0N09 BK     |                                  |
| D5  | N12-C978 GY |                                  |
| D7  | 376T1 O     |                                  |
| D9  | N02-C979 GY |                                  |
| E1  | PLUG        |                                  |
| E9  | PLUG        |                                  |
| F1  | PLUG        |                                  |
| F3  | PLUG        |                                  |
| G1  | N03 T       |                                  |
| G3  | 125A R      |                                  |
| G5  | N13-C992 BK |                                  |
| G7  | N21-C991 R  |                                  |
| G9  | N21-C984 GY |                                  |
| H2  | N14 GY      |                                  |
| H4  | N03 GY      |                                  |
| H6  | 1587-B DKG  |                                  |
| H8  | 1587-B O    |                                  |
| J1  | 15+ R       |                                  |
| J3  | PLUG        |                                  |
| J5  | 339A DKG    |                                  |
| J9  | 97C LTBL    |                                  |
| K2  | 0N06 BK     |                                  |
| K4  | PLUG        |                                  |
| K6  | 71 PK       |                                  |
| K8  | PLUG        |                                  |

| POS | CODE        | CHASSIS/ENGINE HARNESS INTERFACE |
|-----|-------------|----------------------------------|
| A2  | N19-C993 GY |                                  |
| A4  | C409 GY     |                                  |
| A6  | N06 GY      |                                  |
| A8  | N03 GY      |                                  |
| B1  | N18-C985 GY |                                  |
| B3  | N11-C986 GY |                                  |
| B7  | 3390+ DKG   |                                  |
| B9  | 3390- DKG   |                                  |
| C2  | E115 V      |                                  |
| C4  | 376L3 O     |                                  |
| C6  | N16-C981 R  |                                  |
| C8  | N02-C975 GY |                                  |
| D1  | PLUG        |                                  |
| D3  | 0N09 BK     |                                  |
| D5  | N12-C978 GY |                                  |
| D7  | 376T1 O     |                                  |
| D9  | N02-C979 GY |                                  |
| E1  | PLUG        |                                  |
| E9  | PLUG        |                                  |
| F1  | PLUG        |                                  |
| F3  | PLUG        |                                  |
| G1  | N03 T       |                                  |
| G3  | 125A R      |                                  |
| G5  | N13-C992 BK |                                  |
| G7  | N21-C991 R  |                                  |
| G9  | N21-C984 GY |                                  |
| H2  | N14 GY      |                                  |
| H4  | N03 GY      |                                  |
| H6  | 1587-B DKG  |                                  |
| H8  | 1587-B O    |                                  |
| J1  | 15+ R       |                                  |
| J3  | PLUG        |                                  |
| J5  | 339A DKG    |                                  |
| J9  | 97C LTBL    |                                  |
| K2  | 0N06 BK     |                                  |
| K4  | PLUG        |                                  |
| K6  | 71 PK       |                                  |
| K8  | PLUG        |                                  |

| POS | CODE        | CHASSIS/ENGINE HARNESS INTERFACE |
|-----|-------------|----------------------------------|
| A2  | N19-C993 GY |                                  |
| A4  | C409 GY     |                                  |
| A6  | N06 GY      |                                  |
| A8  | N03 GY      |                                  |
| B1  | N18-C985 GY |                                  |
| B3  | N11-C986 GY |                                  |
| B7  | 3390+ DKG   |                                  |
| B9  | 3390- DKG   |                                  |
| C2  | E115 V      |                                  |
| C4  | 376L3 O     |                                  |
| C6  | N16-C981 R  |                                  |
| C8  | N02-C975 GY |                                  |
| D1  | PLUG        |                                  |
| D3  | 0N09 BK     |                                  |
| D5  | N12-C978 GY |                                  |
| D7  | 376T1 O     |                                  |
| D9  | N02-C979 GY |                                  |
| E1  | PLUG        |                                  |
| E9  | PLUG        |                                  |
| F1  | PLUG        |                                  |
| F3  | PLUG        |                                  |
| G1  | N03 T       |                                  |
| G3  | 125A R      |                                  |
| G5  | N13-C992 BK |                                  |
| G7  | N21-C991 R  |                                  |
| G9  | N21-C984 GY |                                  |
| H2  | N14 GY      |                                  |
| H4  | N03 GY      |                                  |
| H6  | 1587-B DKG  |                                  |
| H8  | 1587-B O    |                                  |
| J1  | 15+ R       |                                  |
| J3  | PLUG        |                                  |

| RELEASE NUMBER | REV LTR | ZONE | REVISION DESCRIPTION       | BY  | DATE     | APPD |
|----------------|---------|------|----------------------------|-----|----------|------|
| P21058-01      | B       | --   | SEE SHEET TWO.             | ARZ | 12/12/02 | MWP  |
| P25343-38      | C       | --   | WAS CADAM DWG IS CATIA DWG | JRJ | 08/16/04 | JMD  |
|                |         |      |                            |     |          |      |
|                |         |      |                            |     |          |      |

CHASSIS/ENGINE HARNESS INTERFACE

| POS | CODE       |
|-----|------------|
| A2  | N19 GY     |
| A4  | PLUG       |
| A6  | N06 GY     |
| A8  | N09 GY     |
| B1  | N18 GY     |
| B3  | N11 GY     |
| B7  | 339D+ DKG  |
| B9  | 339D- DKG  |
| C2  | E115 W     |
| C4  | 376L1 O    |
| C6  | N15 R      |
| C8  | N02 GY     |
| D1  | N28B GY    |
| D3  | GND9 BK    |
| D5  | N12 GY     |
| D7  | 376T1 O    |
| D9  | N22 GY     |
| E1  | PLUG       |
| E9  | PLUG       |
| F1  | PLUG       |
| F9  | PLUG       |
| G1  | N03 T      |
| G3  | I25 W      |
| G5  | N13 BK     |
| G7  | N121 R     |
| G9  | N21 GY     |
| H2  | N14 GY     |
| H4  | N23 GY     |
| H6  | 1587+A DKG |
| H8  | 1587-A O   |
| J1  | 15+ PK     |
| J3  | N28A GY    |
| J7  | 339A DKG   |
| J9  | 97C LTBL   |
| K2  | GND6 BK    |
| K4  | PLUG       |
| K6  | 71A PK     |
| K8  | PLUG       |

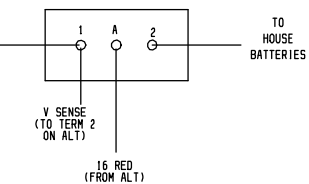
| POS | CODE       |
|-----|------------|
| 1   | N16 GY     |
| 2   | N12 GY     |
| 3   | N25 GY     |
| 4   | N01 GY     |
| 5   | PLUG       |
| 6   | PLUG       |
| 7   | N22 GY     |
| 8   | N03 T      |
| 9   | PLUG       |
| 10  | PLUG       |
| 11  | N31 GY     |
| 12  | PLUG       |
| 13  | N12 GY     |
| 14  | N02 GY     |
| 15  | PLUG       |
| 16  | PLUG       |
| 17  | PLUG       |
| 18  | PLUG       |
| 19  | N15 GY     |
| 20  | N41 GY     |
| 21  | PLUG       |
| 22  | PLUG       |
| 23  | PLUG       |
| 24  | PLUG       |
| 25  | N09 GY     |
| 26  | N06 GY     |
| 27  | GND1 BK    |
| 28  | PLUG       |
| 29  | N18 GY     |
| 30  | N11 GY     |
| 31  | N34 GY     |
| 32  | PLUG       |
| 33  | N13 BK     |
| 34  | N15 R      |
| 35  | N12 GY     |
| 36  | N23 GY     |
| 37  | N21 GY     |
| 38  | PLUG       |
| 39  | PLUG       |
| 40  | N40 GY     |
| 41  | N33 GY     |
| 42  | PLUG       |
| 43  | N38 GY     |
| 44  | PLUG       |
| 45  | PLUG       |
| 46  | PLUG       |
| 47  | PLUG       |
| 48  | PLUG       |
| 49  | 1587+E DKG |
| 50  | 1587-E O   |

ENGINE ECM INTERFACE

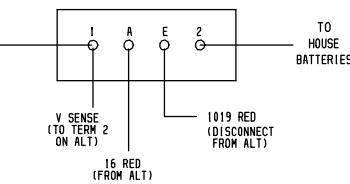
WATER IN FUEL

COMP BRK HI/LO

RECOMMENDED BATTERY ISOLATOR WIRING FOR THREE WIRE ALT



RECOMMENDED BATTERY ISOLATOR WIRING FOR DELCO-REMY 31-S1



ITEM NUMBER  
DESCRIPTION  
D06-41137-000  
SCHEMATIC, ELEC, XC, 02

**FREIGHTLINER**  
LLC

THE INFORMATION CONTAINED HEREIN IS PROPRIETARY DATA, AND IS NOT FOR DISSEMINATION OR DISCLOSURE, IN WHOLE OR IN PART, FOR ANY PURPOSE OTHER THAN THAT FOR WHICH IT IS SUBMITTED, EXCEPT AS AUTHORIZED IN WRITING BY FREIGHTLINER LLC.

MATERIAL APPROVAL  
M. PITSENBARGER  
DATE  
04/05/01

DRAWN BY  
C. SHAW  
DATE  
04/05/01

CHECKED BY  
E. REYNOLDS  
DATE  
04/05/01

RESPONSIBLE ENGINEER  
E. REYNOLDS  
DATE  
04/05/01

APPROVED BY  
M. PITSENBARGER  
DATE  
04/05/01

UNLESS OTHERWISE NOTED, DIMENSIONS AND TOLERANCES ARE DEFINED ACCORDING TO ASME STANDARD Y14.5M-1994, WITH EXCEPTIONS PER FREIGHTLINER EDSM 09EO-K17.

THIRD ANGLE PROJECTION

UNITS OF MEASURE  
MM

DATE

DESCRIPTION  
SCHEMATIC, ELEC, XC, 02  
SUPPLEMENTARY DESCRIPTION  
280B2

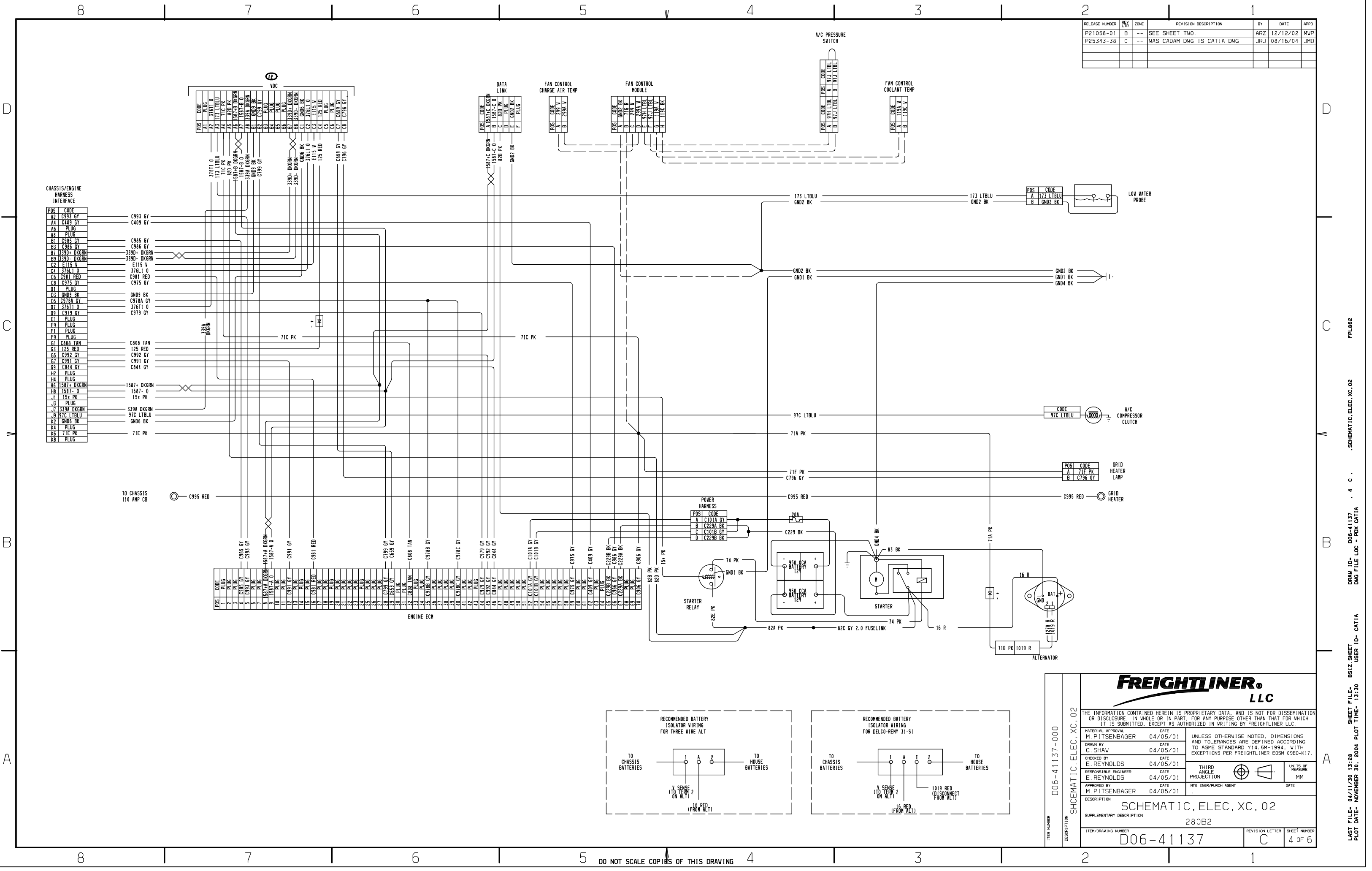
ITEM/DRAWING NUMBER  
D06-41137

REVISION LETTER  
C

SHEET NUMBER  
3 OF 6

LAST FILE- 04/11/20 13:28 PLOT DATE- NOVEMBER 30, 2004 PLOT TIME- 13:30 SHEET FILE- BS1Z SHEET USER ID- CATIA DRAW ID- D06-41137 DNG FILE LOC - PDX CATIA . 3 . SCHEMATIC, ELEC, XC, 02 FPL862

DO NOT SCALE COPIES OF THIS DRAWING



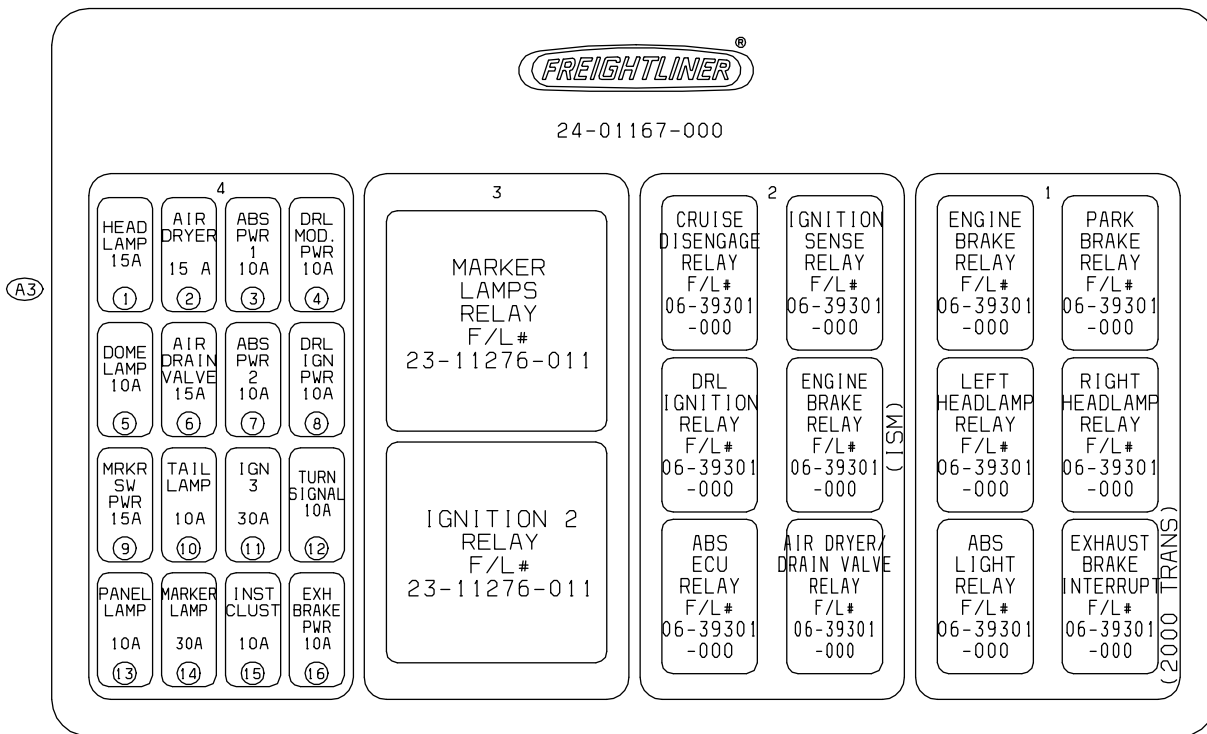
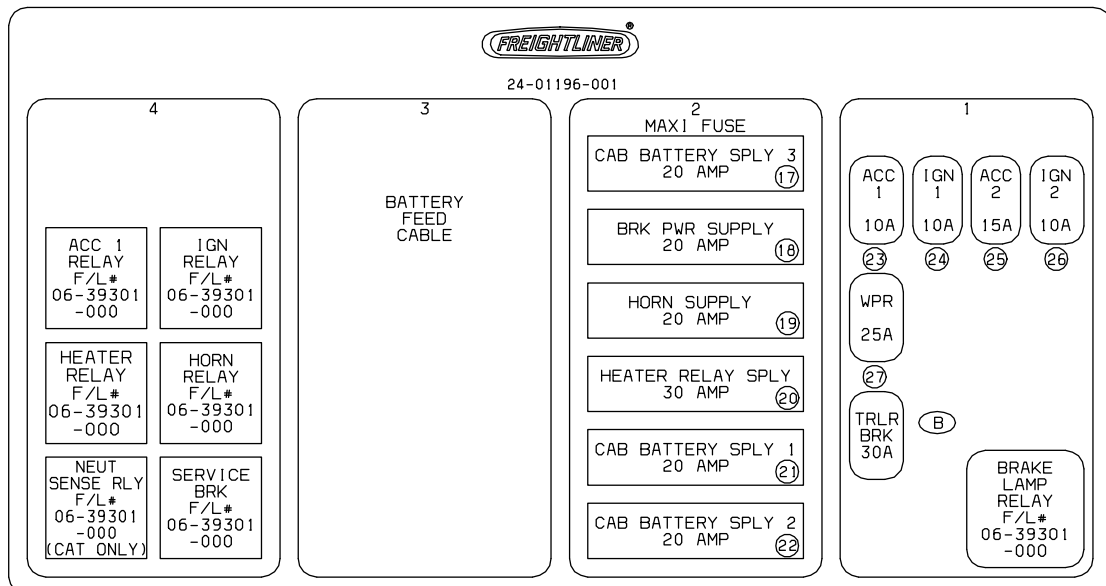
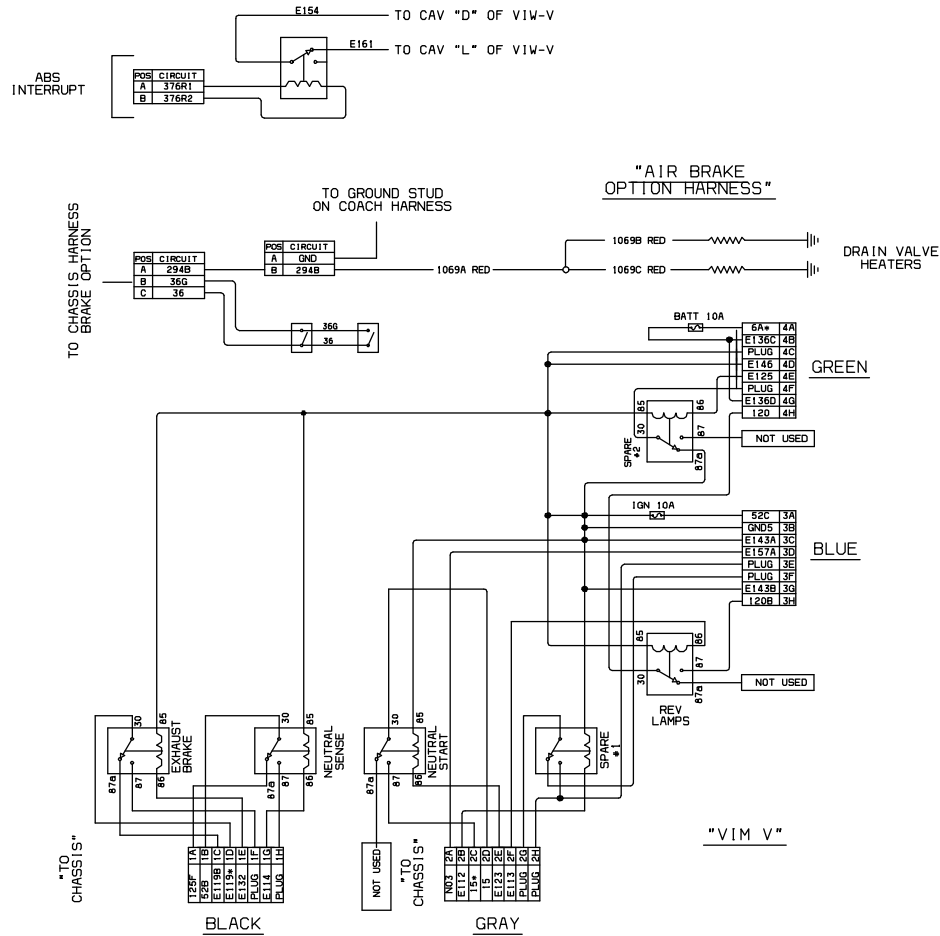
| RELEASE NUMBER | REV LTR | ZONE | REVISION DESCRIPTION       | BY  | DATE     | APPD |
|----------------|---------|------|----------------------------|-----|----------|------|
| P21058-01      | B       | --   | SEE SHEET TWO.             | ARZ | 12/12/02 | MWP  |
| P25343-38      | C       | --   | WAS CADAM DWG IS CATIA DWG | JRJ | 08/16/04 | JMD  |
|                |         |      |                            |     |          |      |
|                |         |      |                            |     |          |      |

ITEM NUMBER  
D06-41137-000

DESCRIPTION  
SCHEMATIC, ELEC, XC, 02

|   |  |   |                        |                        |
|---|--|---|------------------------|------------------------|
| MATERIAL APPROVAL<br>M. PITSENBAGER<br>DATE<br>04/05/01 |  | UNLESS OTHERWISE NOTED, DIMENSIONS AND TOLERANCES ARE DEFINED ACCORDING TO ASME STANDARD Y14.5M-1994, WITH EXCEPTIONS PER FREIGHTLINER EDSM 09E0-K17. | THIRD ANGLE PROJECTION | UNITS OF MEASURE<br>MM |
| DRAWN BY<br>C. SHAW<br>DATE<br>04/05/01                 |  |   |                        |                        |
| CHECKED BY<br>E. REYNOLDS<br>DATE<br>04/05/01           |  | MFG ENGR/PURCH AGENT  |                        |                        |
| RESPONSIBLE ENGINEER<br>E. REYNOLDS<br>DATE<br>04/05/01 |  | DATE  |                        |                        |
| APPROVED BY<br>M. PITSENBAGER<br>DATE<br>04/05/01       |  | DATE  |                        |                        |
| DESCRIPTION<br>SCHEMATIC, ELEC, XC, 02                  |  |   |                        |                        |
| SUPPLEMENTARY DESCRIPTION<br>280B2                      |  |   |                        |                        |
| ITEM/DRAWING NUMBER<br>D06-41137                        |  | REVISION LETTER<br>C  | SHEET NUMBER<br>4 OF 6 |                        |

| RELEASE NUMBER | REV LTR | ZONE | REVISION DESCRIPTION       | BY  | DATE     | APPD |
|----------------|---------|------|----------------------------|-----|----------|------|
| P21058-01      | B       | --   | ADDED TOW WIRING           | ARZ | 12/12/02 | MWP  |
| P25343-38      | C       | --   | WAS CADAM DWG IS CAT1A DWG | JRJ | 08/16/04 | JMD  |
|                |         |      |                            |     |          |      |
|                |         |      |                            |     |          |      |



ITEM NUMBER  
D06-41137-000

DESCRIPTION  
SCHEMATIC, ELEC, XC, 02

**FREIGHTLINER**  
LLC

THE INFORMATION CONTAINED HEREIN IS PROPRIETARY DATA, AND IS NOT FOR DISSEMINATION OR DISCLOSURE, IN WHOLE OR IN PART, FOR ANY PURPOSE OTHER THAN THAT FOR WHICH IT IS SUBMITTED, EXCEPT AS AUTHORIZED IN WRITING BY FREIGHTLINER LLC.

MATERIAL APPROVAL  
M. PITSENBARGER  
DATE  
04/05/01

CHECKED BY  
E. REYNOLDS  
DATE  
04/05/01

RESPONSIBLE ENGINEER  
E. REYNOLDS  
DATE  
04/05/01

APPROVED BY  
M. PITSENBARGER  
DATE  
04/05/01

UNLESS OTHERWISE NOTED, DIMENSIONS AND TOLERANCES ARE DEFINED ACCORDING TO ASME STANDARD Y14.5M-1994, WITH EXCEPTIONS PER FREIGHTLINER EDSM 09E0-K17.

THIRD ANGLE PROJECTION

UNITS OF MEASURE  
MM

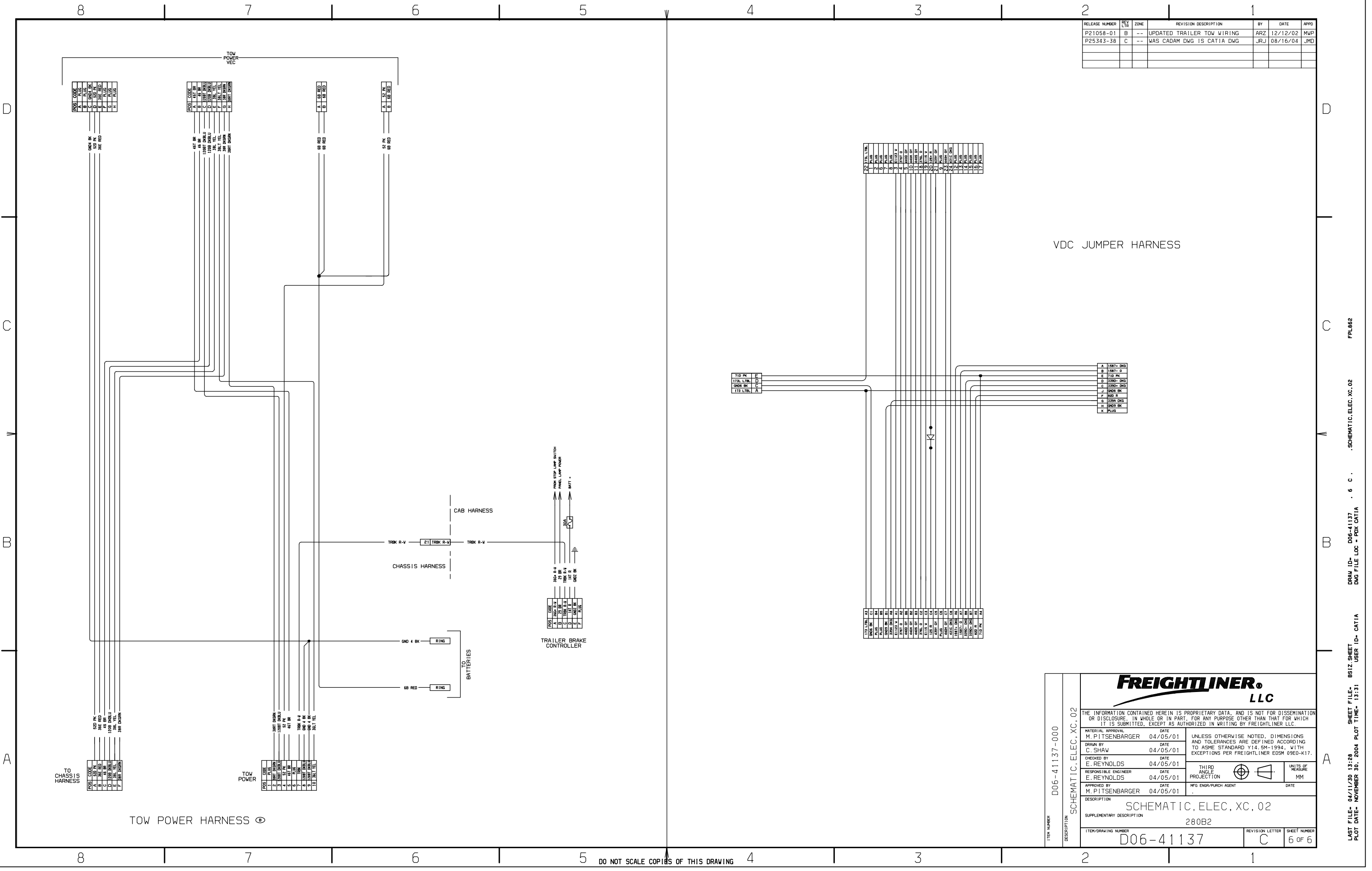
DESCRIPTION  
SCHEMATIC, ELEC, XC, 02

SUPPLEMENTARY DESCRIPTION  
280B2

ITEM/DRAWING NUMBER  
D06-41137

REVISION LETTER  
C

SHEET NUMBER  
5 OF 6



| RELEASE NUMBER | REV LTR | ZONE | REVISION DESCRIPTION       | BY  | DATE     | APPD |
|----------------|---------|------|----------------------------|-----|----------|------|
| P21058-01      | B       | --   | UPDATED TRAILER TOW WIRING | ARZ | 12/12/02 | MWP  |
| P25343-38      | C       | --   | WAS CADAM DWG 1S CATIA DWG | JRJ | 08/16/04 | JMD  |
|                |         |      |                            |     |          |      |
|                |         |      |                            |     |          |      |

VDC JUMPER HARNESS

ITEM NUMBER  
D06-41137-000

DESCRIPTION  
SCHEMATIC, ELEC, XC, 02

MATERIAL APPROVAL  
M. PITSENBARGER  
C. SHAW

CHECKED BY  
E. REYNOLDS

RESPONSIBLE ENGINEER  
E. REYNOLDS

APPROVED BY  
M. PITSENBARGER

DATE  
04/05/01

DATE  
04/05/01

DATE  
04/05/01

DATE  
04/05/01

UNLESS OTHERWISE NOTED, DIMENSIONS AND TOLERANCES ARE DEFINED ACCORDING TO ASME STANDARD Y14.5M-1994, WITH EXCEPTIONS PER FREIGHTLINER EDSM 09EO-K17.

THIRD ANGLE PROJECTION

UNITS OF MEASURE  
MM

DESCRIPTION  
SCHEMATIC, ELEC, XC, 02

SUPPLEMENTARY DESCRIPTION  
280B2

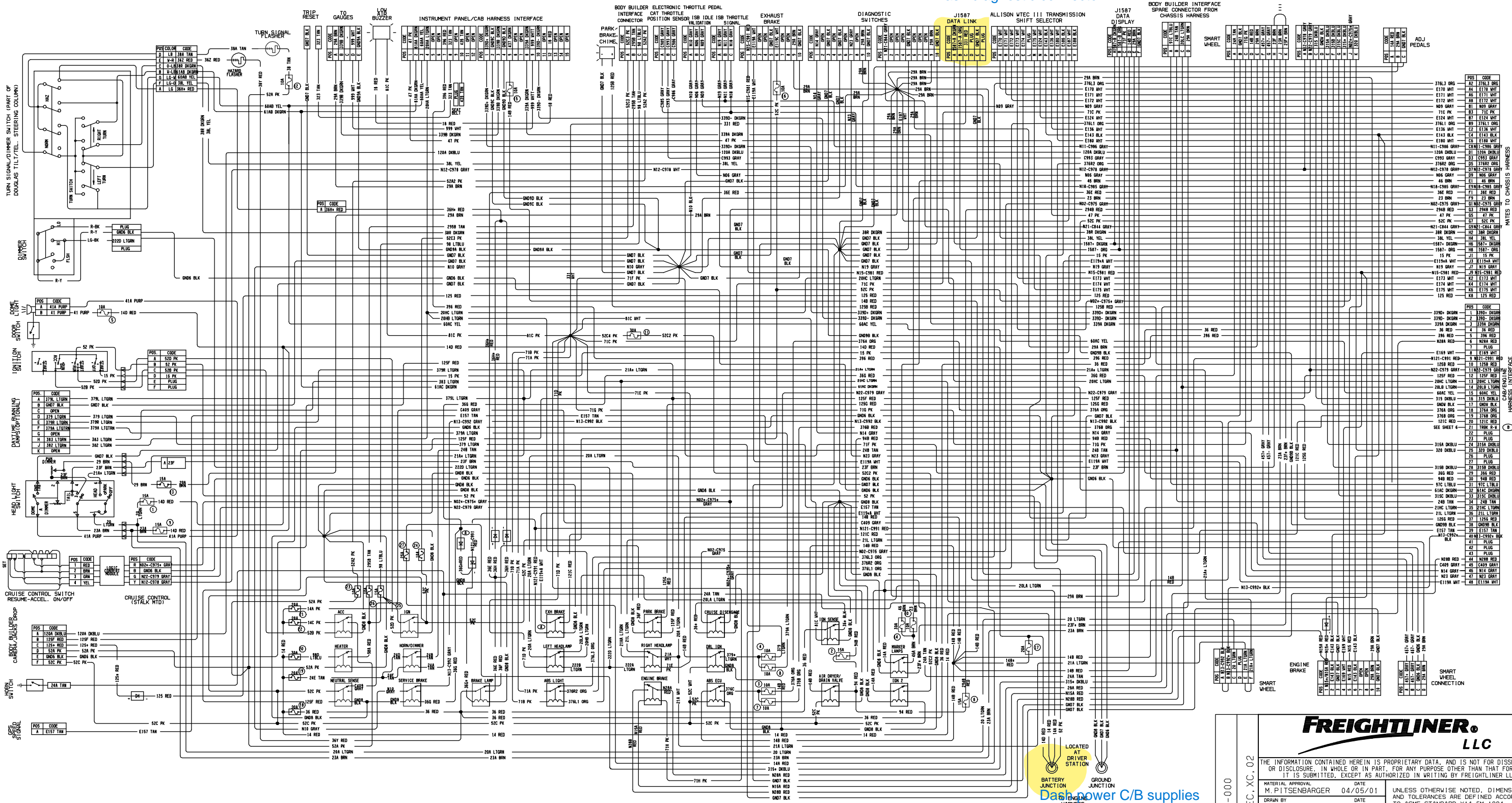
ITEM/DRAWING NUMBER  
D06-41137

REVISION LETTER  
C

SHEET NUMBER  
6 OF 6

| RELEASE NUMBER | REV LTR | ZONE | REVISION DESCRIPTION         | BY  | DATE     | APPD |
|----------------|---------|------|------------------------------|-----|----------|------|
| P21058-01      | B       | --   | ADDED TOW WIRING             | ARJ | 12/12/02 | MWP  |
| P25343-38      | C       | --   | WAS CADAM DRWG IS CATIA DRWG | JRJ | 08/16/04 | JMD  |
|                |         |      |                              |     |          |      |
|                |         |      |                              |     |          |      |

## Dash diagnostic connector



1. THESE SCHEMATICS FOR CHASSIS STARTING 06/01/01.
2. FOLLOWING CIRCUITS ARE TWISTED PAIRS (MIN 1 TWIST/25MM). 1587+/1587-, 1587+A/1587-A, 1587-B/1587-B, AND 339+/339D-.
3. N11/N18/N19 ARE TWISTED TRIPLETS (MIN 1 TWIST/25MM).

|   |  |   |  |
|---|--|---|--|
| <b>FREIGHTLINER LLC</b><br>THE INFORMATION CONTAINED HEREIN IS PROPRIETARY DATA, AND IS NOT FOR DISSEMINATION OR DISCLOSURE, IN WHOLE OR IN PART, FOR ANY PURPOSE OTHER THAN THAT FOR WHICH IT IS SUBMITTED, EXCEPT AS AUTHORIZED IN WRITING BY FREIGHTLINER LLC. |  | MATERIAL APPROVAL DATE<br>M. PITSENBERGER 04/05/01  |  |
|   |  | UNLESS OTHERWISE NOTED, DIMENSIONS AND TOLERANCES ARE DEFINED ACCORDING TO ASME STANDARD Y14.5M-1994, WITH EXCEPTIONS PER FREIGHTLINER EDSM 0900-1.7. |  |
| DRAWN BY DATE<br>C. SHAW 04/05/01   |  | THIRD ANGLE PROJECTION  |  |
| CHECKED BY DATE<br>E. REYNOLDS 04/05/01   |  | UNITS OF MEASURE<br>MM  |  |
| RESPONSIBLE ENGINEER DATE<br>E. REYNOLDS 04/05/01   |  | MFG ENGR/PURCH AGENT DATE   |  |
| APPROVED BY DATE<br>M. PITSENBERGER 04/05/01  |  | DESCRIPTION<br>SCHEMATIC, ELEC, XC, 02  |  |
| SUPPLEMENTARY DESCRIPTION<br>280B2  |  | SHEET NUMBER<br>1 OF 6  |  |
| ITEM/DRAWING NUMBER<br>D06-41137  |  | REVISION LETTER<br>C  |  |

FPL862

SCHEMATIC, ELEC, XC, 02

DRAW ID: D06-41137

USER ID: CATIA

LAST FILE: 04/11/20 13:28  
PLOT DATE: NOVEMBER 30, 2004 PLOT TIME: 13:28